

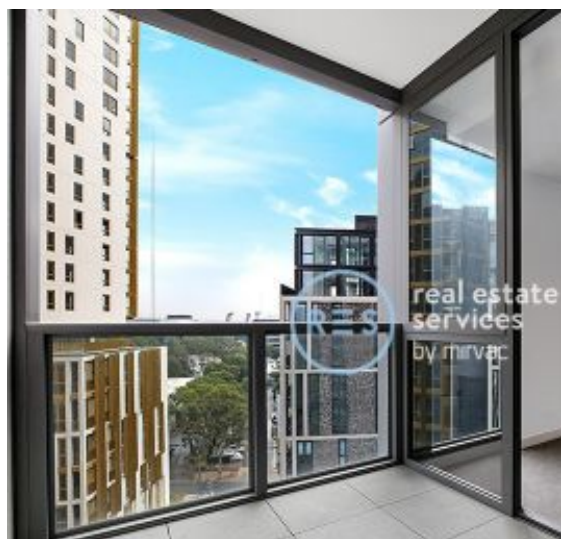
# DEPOSIT TAKEN

More apartments available for lease

Please call 02 8588 8888 or  
email [enquiries@resbymirvac.com](mailto:enquiries@resbymirvac.com) to book your inspection today

[www.resbymirvac.com](http://www.resbymirvac.com)

PAVILIONS  
RESIDENCES



## SYDNEY OLYMPIC PARK, NSW 21005/2 Figtree Drive

1  
BED

1  
BATH



### Premium Brand New North West Facing 1 Bedroom + Media Apartment in Scarlet

This 63sqm, 1-Bedroom + Media Apartment features:

- Spacious bedroom with generous built-in wardrobes
- Open-plan living and dining area, leading to the balcony
- Contemporary kitchen with stone benchtop and Smeg appliances
- Sleek bathroom with generous vanity storage
- North West facing Sunny balcony, perfect for entertaining
- Internal laundry with dryer included
- Media area included, perfect for a home office
- Secure storage cage included
- Ducted A/C, video intercom and NBN connectivity
- Resident access to gym, community room and open BBQ area

### DEPOSIT TAKEN

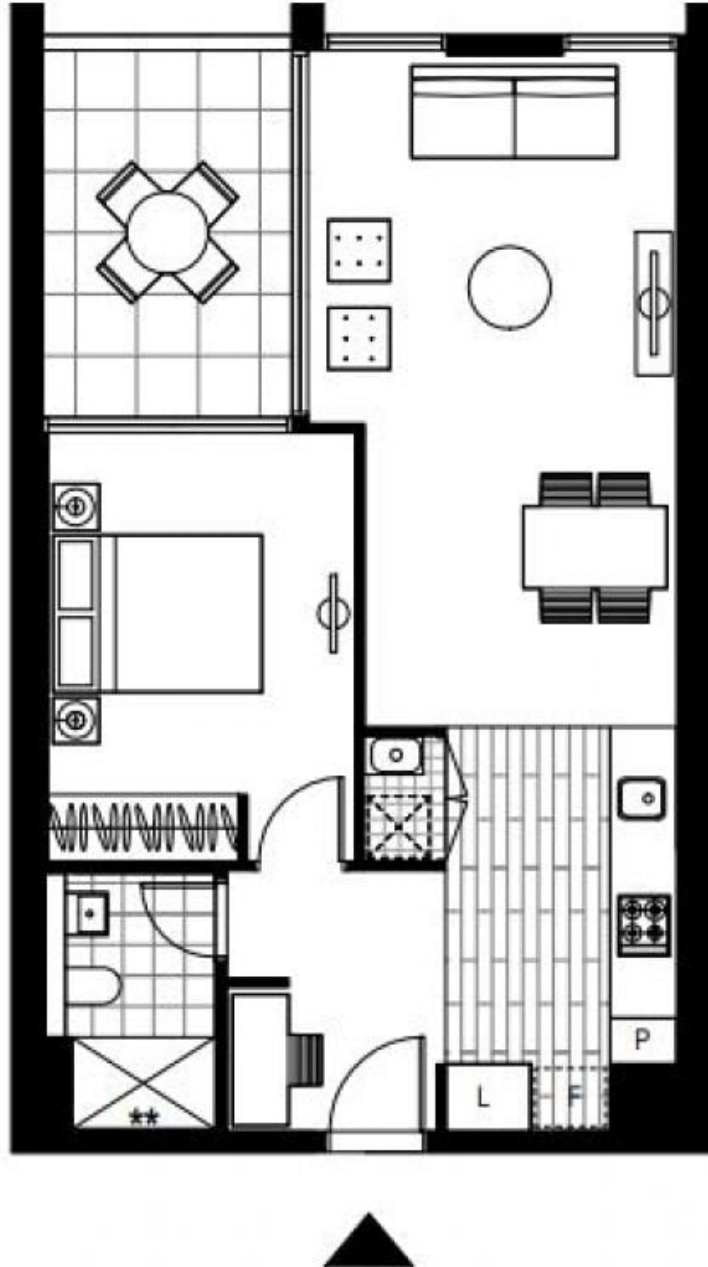
**Contact:** Christine Howison  
02 8588 8888  
0459 222 085

**Type:** Apartment

**Date Available:** 08/08/2020

**Bond:** \$1400

<https://www.resbymirvac.com>



Plans shown are only indicative of layout. Dimensions are approximate.

**SYDNEY OLYMPIC PARK, NSW**  
21005/2 Figtree Drive