

PAVILIONS

R E S I D E N C E S

by mirvac

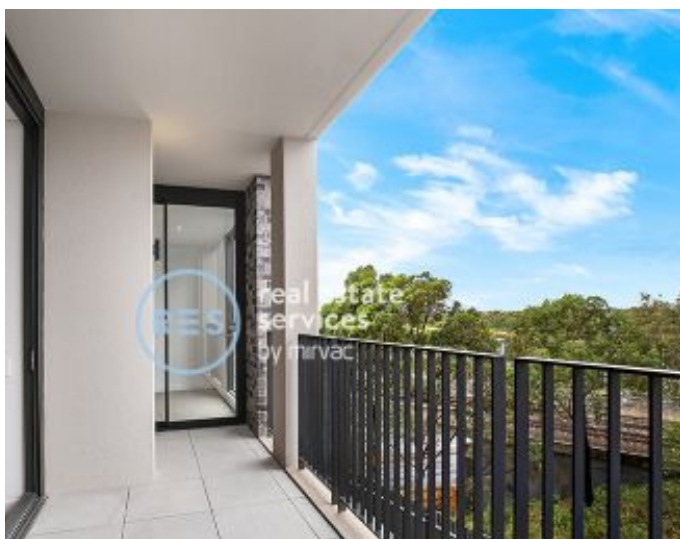
1 bedroom from \$480
2 bedroom from \$580
3 bedroom at \$680

**RENTAL
REDUCTIONS**

Contact leasing agent
for more details

INSPECT SATURDAY 11.00am - 2.00pm

Meet the leasing team at 2 Figtree Drive, Sydney Olympic Park



SYDNEY OLYMPIC PARK, NSW
20211/2 Figtree Drive

2 **2** **1**
BED BATH CAR



Brand New South East Facing 2 Bedroom Apartment in Pavilions By Mirvac

This 89sqm, 2-Bedroom Apartment features:

- Spacious bedrooms with generous built-in wardrobes
- Open-plan living and dining area, leading to the balcony
- Contemporary kitchen with stone benchtops and Smeg appliances
- Sleek bathrooms with generous vanity storage
- South East facing balcony, perfect for entertaining
- Internal laundry with dryer included
- Secure car space and storage cage included
- Ducted A/C, video intercom and NBN connectivity
- Resident access to gym, community room and open BBQ area
- 550m to the Olympic Park Train Station, 650m to the Bicentennial Park, 700m to ANZ Stadium

DEPOSIT TAKEN

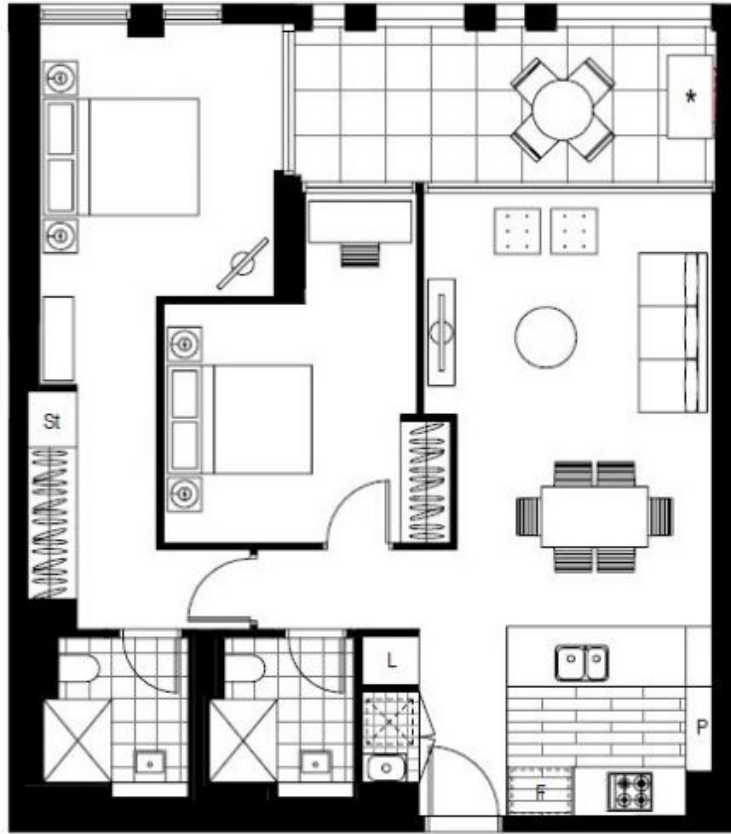
Contact: Matthew Matthews
02 8588 8888
0418 266 590
Christine Howison
02 8588 8888
0459 222 085

Type: Apartment

Date Available: 30/07/2020

Bond: \$1980

<https://www.resbymirvac.com>



Plans shown are only indicative of layout. Dimensions are approximate.

SYDNEY OLYMPIC PARK, NSW
20211/2 Figtree Drive