



GLEBE, NSW
217/19 Minogue Cres

1 BED **1** BATH



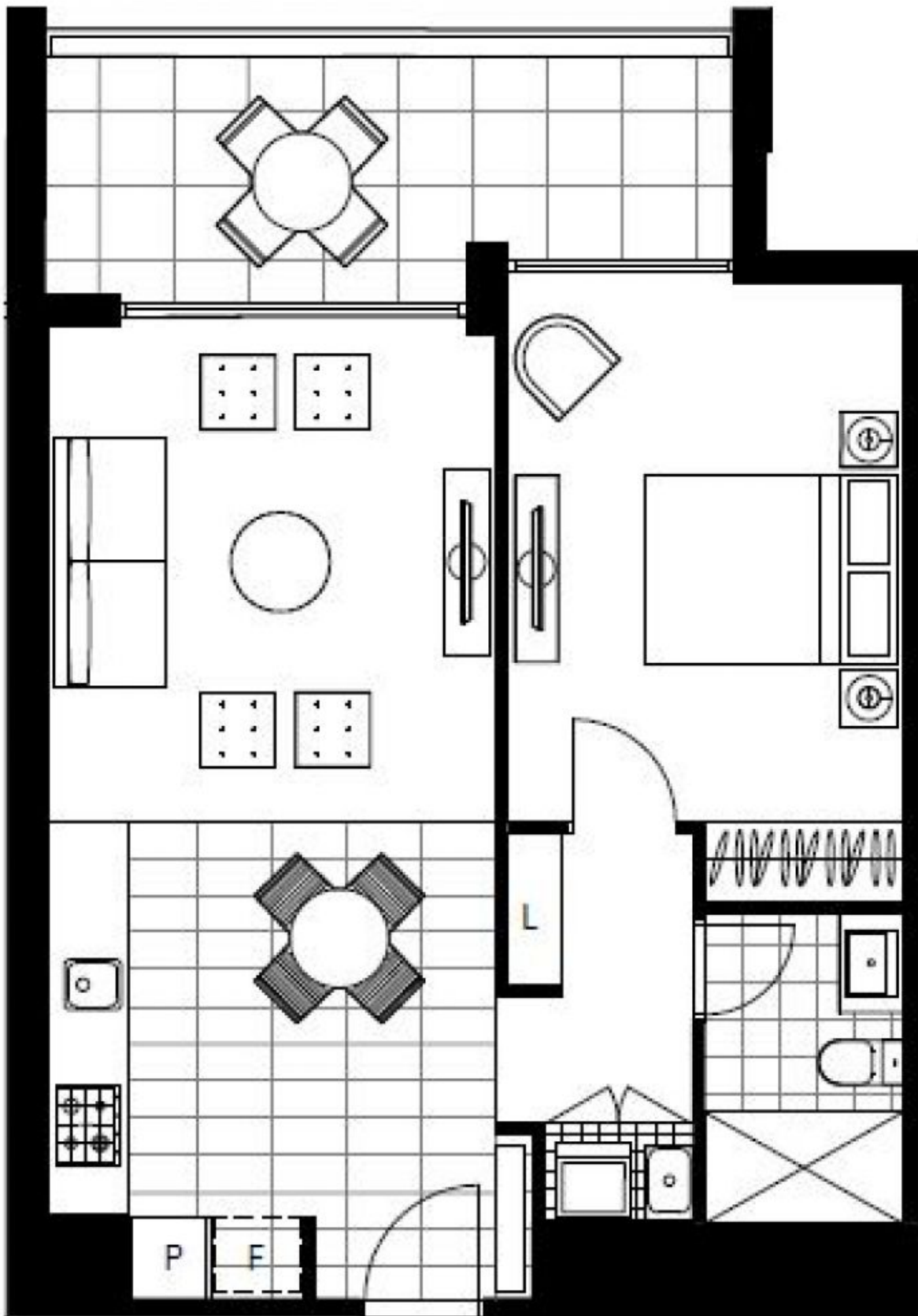
Deposit Taken | More are available, call our team on: 02 8588 8888

- This 60sqm, 2nd floor 1-Bedroom Apartment features:
- A Harold Park Favourite, 350m to Tramsheds
 - Large 1-Bedroom Apartment in Harold Park
 - Large bedroom with floor to ceiling built-in wardrobe
 - Open-plan living and dining area flowing onto balcony
 - Modern galley style kitchen with stone benchtop and Miele appliances
 - Sleek bathroom with plenty of storage
 - Internal laundry with washing machine and dryer included
 - South-facing balcony with leafy outlook
 - Secure basement storage cage included
 - Ducted Air conditioning, video intercom and NBN connectivity
 - 350m to the Tramsheds, light rail station and public transport

Deposit Taken | More are available: 02 8588 8888

Contact: Naz Sabzpouri
02 8588 8888
0401 545 440

Type: Apartment
Date Available: 13/06/2020
Bond: \$2100
<https://www.resbymirvac.com>



Plans shown are only indicative of layout. Dimensions are approximate.

GLEBE, NSW
217/19 Minogue Cres