



## GLEBE, NSW

217/19 Minogue Cres

**1**  
BED

**1**  
BATH



**Deposit Taken | More are available, call our team on: 02 8588 8888**

This 60sqm, 2nd floor 1-Bedroom Apartment features:

A Harold Park Favourite, 350m to Tramsheds

Large 1-Bedroom Apartment in Harold Park

- Large bedroom with floor to ceiling built-in wardrobe
- Open-plan living and dining area flowing onto balcony
- Modern galley style kitchen with stone benchtop and Miele appliances
- Sleek bathroom with plenty of storage
- Internal laundry with washing machine and dryer included
- South-facing balcony with leafy outlook
- Secure basement storage cage included
- Ducted Air conditioning, video intercom and NBN connectivity
- 350m to the Tramsheds, light rail station and public transport

**Deposit Taken | More are available: 02 8588 8888**

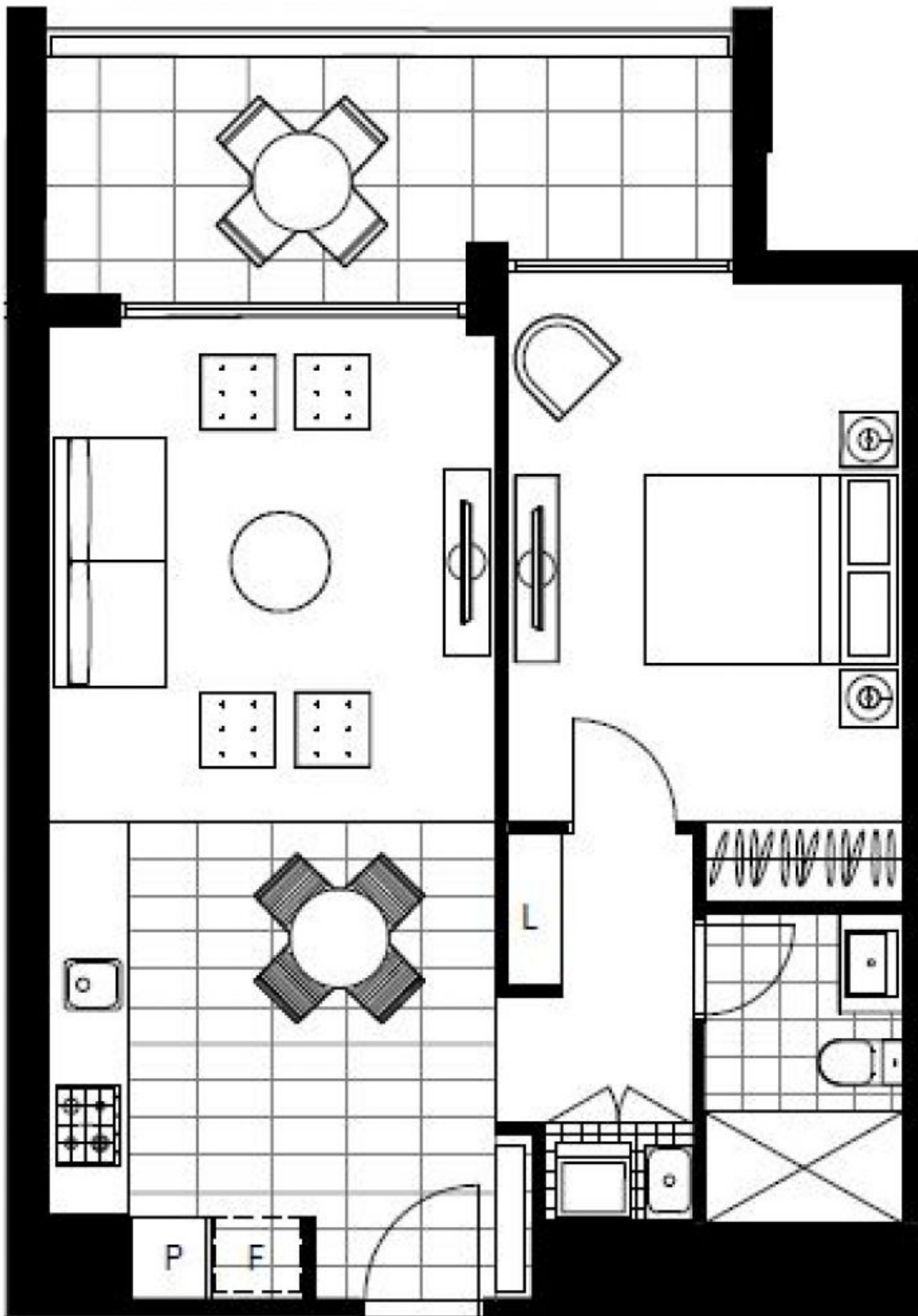
**Contact:** Naz Sabzpouri  
02 8588 8888  
0401 545 440

**Type:** Apartment

**Date Available:** 13/06/2020

**Bond:** \$2100

<https://www.resbymirvac.com>



Plans shown are only indicative of layout. Dimensions are approximate.

**GLEBE, NSW**  
217/19 Minogue Cres