



## ZETLAND, NSW

302/8 Ebsworth Street

**2**  
BED

**1**  
BATH



### Modern 2-Bedroom Apartment in Green Square!

This 81sqm, 3rd floor Apartment features:

- Spacious bedrooms with generous built-in wardrobes
- Open-plan living and dining area, leading to the balcony
- Contemporary kitchen with stone benchtops and Smeg appliances
- Sleek bathroom with plenty of vanity storage
- Generous balcony, great for entertaining
- Internal laundry with dryer included
- Secure storage cage included
- Ducted A/C, video intercom and NBN connectivity
- 300m to Woolworths, The Social Corner and Green Square Train Station (10mins to the City)

### DEPOSIT TAKEN - More Apartments Available!

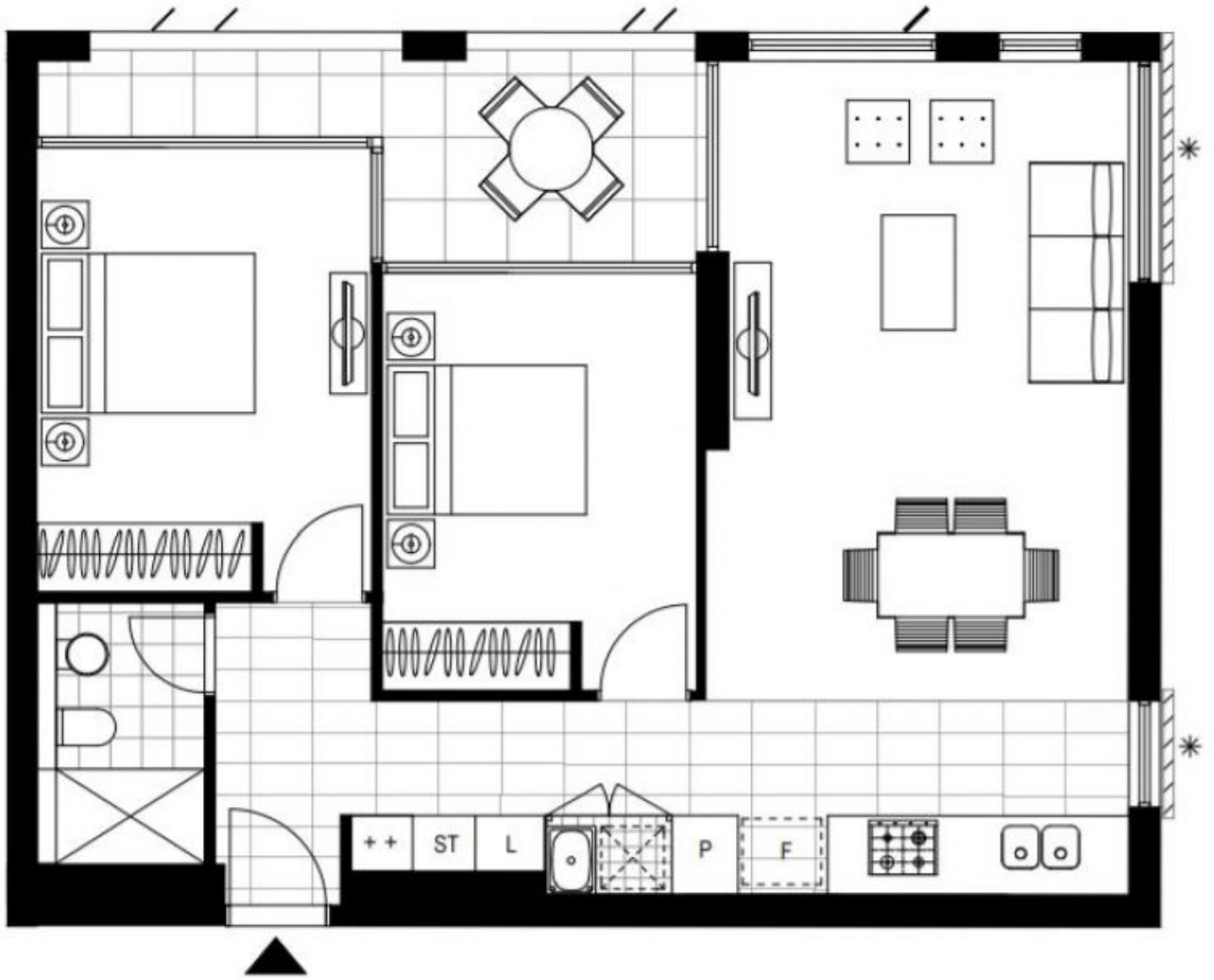
**Contact:** Carmen Whiteley  
02 8588 8888  
0497 555 519

**Type:** Apartment

**Date Available:** 29/06/2020

**Bond:** \$2380

<https://www.resbymirvac.com>



Plans shown are only indicative of layout. Dimensions are approximate.

**ZETLAND, NSW**  
302/8 Ebsworth Street