

DOCKLANDS, VIC

514/13 Point Park Crescent

2
BED

2
BATH

2
CAR



An exclusive Yarra Point offering with exceptional views

Offering a unique floorplan that offers two levels, and perfectly positioned next to the Yarra River giving you a sense of peace and tranquility 24/7 as well as breathtaking water views you'll never get tired of, this immaculate and light-filled 2 bedroom + study, 2 bathroom dual level apartment is a modern delight in the podium section of the Yarra Point complex.

\$1,000,000

Contact:

Baden Lucas
03 9645 1199
0418 888 751

Type:

Apartment

Sold Date:

11/11/2020

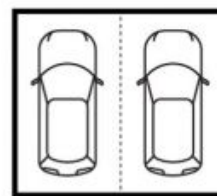
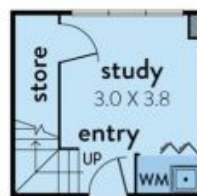
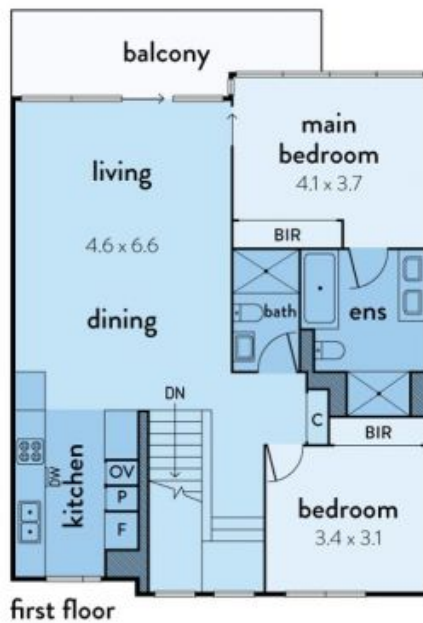
<https://www.resbymirvac.com>

- ? Apartment is stunningly presented and a dream for owner-occupiers
- ? North-facing orientation gives you uninterrupted vistas of the Yarra River as well as green views of the parklands below
- ? Generous undercover balcony is the ideal place to soak in the water views over breezy summer dinners and cheeky weekend wines
- ? Central living and dining zone has wonderful light and a great open design

514/13 POINT PARK CRESCENT, DOCKLANDS



This floorplan is an artist's impression only, it contains information that we believe to be reliable however we cannot guarantee and accept no responsibility for the accuracy of information supplied. All dimensions are indicative and listed in metres. Interested parties should take their own measurements or engage the services of a licensed surveyor.



carspaces
(not in position)

Plans shown are only indicative of layout. Dimensions are approximate.

DOCKLANDS, VIC
514/13 Point Park Crescent