

DOCKLANDS, VIC

1401/60 Lorimer Street

2
BED

2
BATH

2
CAR



Stunning corner apartment with views of CBD, Yarra River & Port Phillip Bay

In a location just moments from Melbourne's cosmopolitan CBD and a short stroll from restaurants, cafes and shopping at Southbank, harbour side living has never been more complete!

Residents will enjoy use of Mirvac's RekDek personal wellness facility comprising indoor pool, sauna, spa, steam room and gym.

Apartment features:

- ? Floor to ceiling windows with views over Melbourne's CBD and Yarra River & Port Phillip Bay
- ? Luxurious ensuite with large shower and spacious vanity
- ? Newly renovated kitchen with large island bench

\$795 per week

Contact: Baden Lucas
03 9645 1199
0418 888 751

Type: Apartment

Date Available: 06/07/2020

Leased Date: 14/09/2020

Bond: \$4770

<https://www.resbymirvac.com>

lucas | real estate

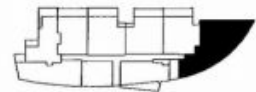
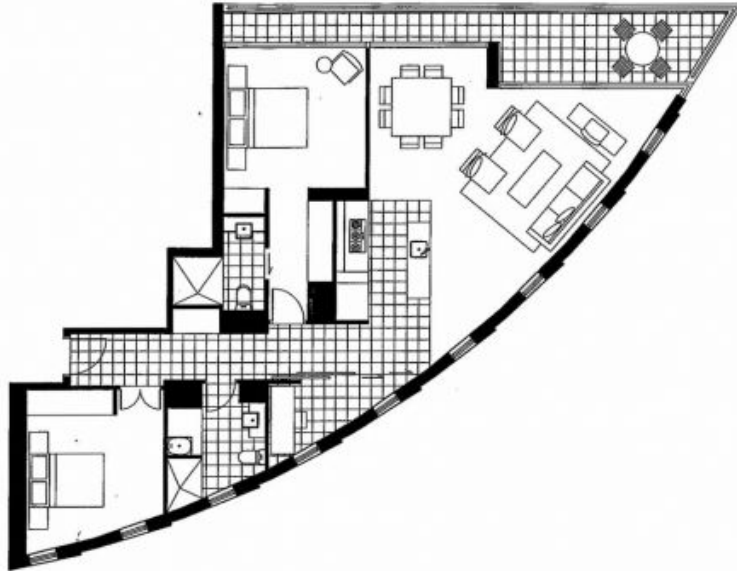
Tower 2
Apartment 01
Level 6 - 20

Living 3.2 x 4.1
Dining 2.9 x 3.0

Bedroom 1 3.5 x 3.6
Bedroom 2 3.0 x 3.5
Study 1.2 x 2.0

Plus Robe
Plus Robe

Please note that this floor plan is a guide only.
The information contained herein is not guaranteed.
Dimensions are approximate. Prospect purchasers
must rely on their own enquiries.



9645 1199
62 River Esplanade Victoria 3008
www.lucasre.com.au

Plans shown are only indicative of layout. Dimensions are approximate.

DOCKLANDS, VIC
1401/60 Lorimer Street