

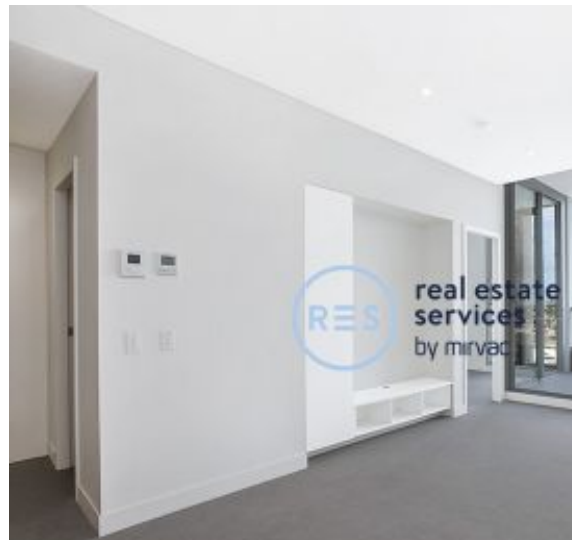
DEPOSIT TAKEN

## More apartments available for lease in Green Square - Zetland!

Please call 0497 555 519 or email [carmen.whiteley@resbymirvac.com](mailto:carmen.whiteley@resbymirvac.com) for more information



GREEN SQUARE



### ZETLAND, NSW 208/18 Ebsworth Street

**1**  
BED

**1**  
BATH



#### Spacious 1-Bedroom Apartment with Study in Zetland

This Level 2, 68sqm 1-Bedroom Apartment features;

- Large bedroom with floor to ceiling built-in wardrobe
- Open plan living and dining area flowing onto balcony
- Separate study room with storage cupboard
- Modern kitchen with stone benchtop and SMEG appliances
- Spacious, west-facing balcony
- Sleek bathroom with plenty of storage
- Internal laundry with dryer included
- Secure basement storage cage included
- Ducted A/C, video intercom and NBN connectivity
- 300m to Woolworths, The Social Corner and Green Square Train Station.

#### Call 0497 555 519 for similar apartments!

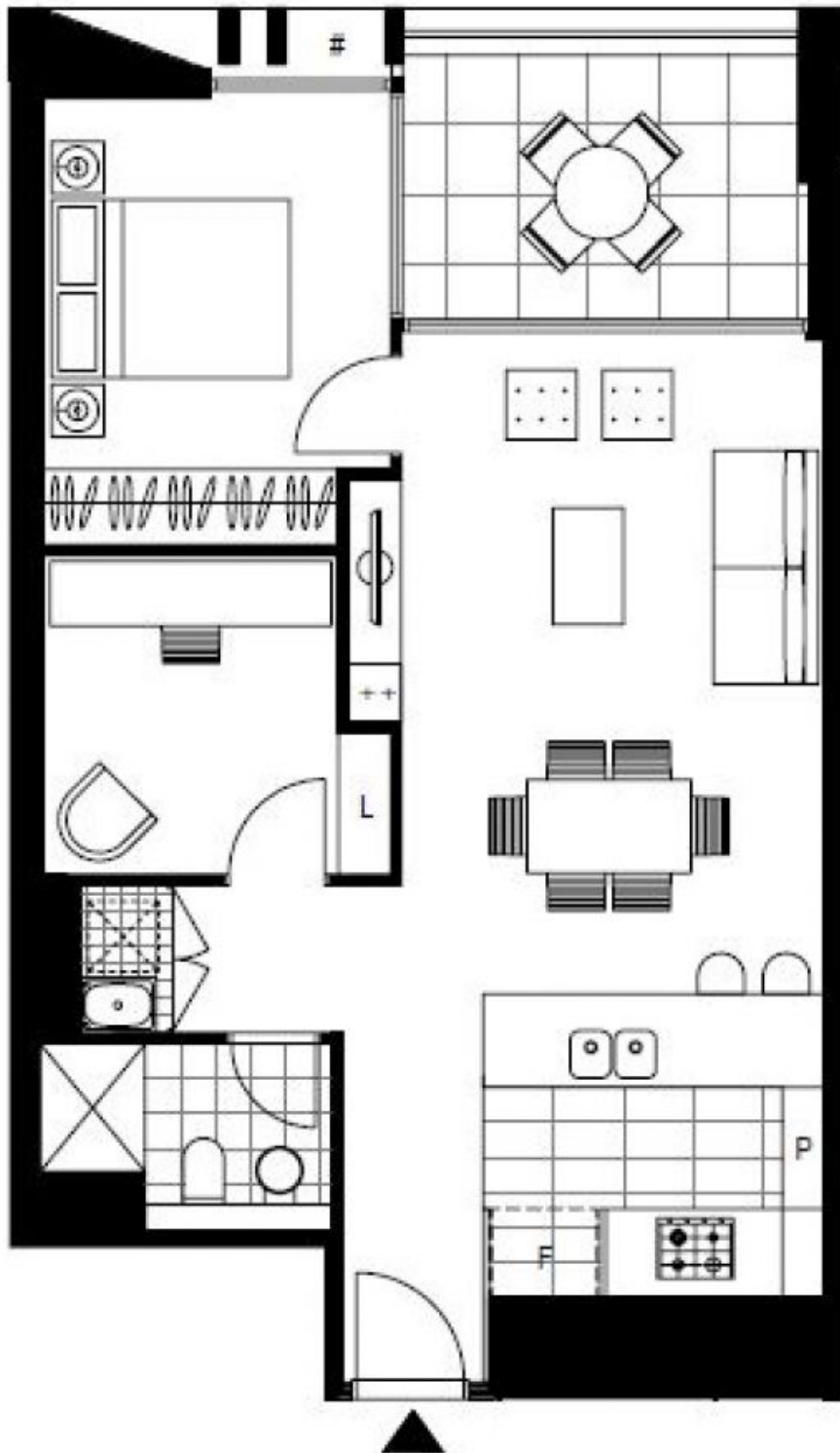
**Contact:** Carmen Whiteley  
02 8588 8888  
0497 555 519

**Type:** Apartment

**Date Available:** 01/07/2020

**Bond:** \$2320

<https://www.resbymirvac.com>



LEVEL 3

Plans shown are only indicative of layout. Dimensions are approximate.

**ZETLAND, NSW**  
208/18 Ebsworth Street