



DOCKLANDS, VIC

202/60 Lorimer Street

2
BED

1
BATH

1
CAR



Podium Perfection - Unbeatable vistas and northern aspect

This well present and spacious floorplan which has a thoughtful open layout and low-maintenance feel, this north-facing two bedroom apartment located in the sought-after Yarra's Edge precinct has been recarpeted and freshly painted ready for the new occupiers.

This apartment is ideal for those who love its easy care nature and great riverside location. Generous lounge and dining opens out to a large balcony, which is a great sheltered outdoor space that can be used all year round.

A well-appointed kitchen delivers a splashback, stone surfaces, island bench which can be moved, meanwhile both bedrooms have mirrored built-in robes including the ultra-spacious main bedroom with study nook. The 2nd bedroom also has direct balcony access. Other highlights include a study nook in the living room, tiled bathroom with European laundry,

ducted heating and cooling, video intercom, one car space, and access to RekDek incl. gym, pool, spa, steam room, and sauna.

Walk to South Wharf attractions including DFO shopping and restaurants and bars including Munich Brauhaus, The General Assembly, Plus 5 Bar, Meat Market, and The Boatbuilders Yard just to name a few. You're also close to Crown Casino with world class restaurants, CBD, and transport including Southern Cross Station and trams on Spencer Street.

Book your private inspection or join us for a virtual tour today!

\$480 per week

Contact: Baden Lucas
03 9645 1199
0418 888 751
Aleisha Clark
03 9645 1199
0491 174 507

Type: Apartment

Date Available: 19/06/2020

Leased Date: 25/03/2021

Bond: \$2880

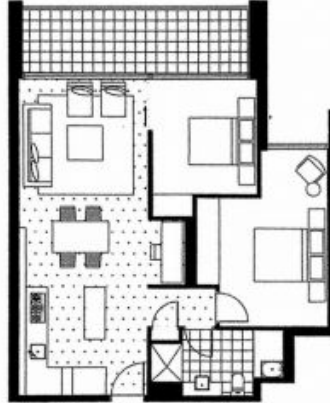
<https://www.resbymirvac.com>

lucas | real estate

Tower 2
Apartment 02
Level 2 - 20

Living 3.6 x 3.6
Dining 2.3 x 3.3
Bedroom 1 3.1 x 3.7
Bedroom 2 3.0 x 3.3
Plus Robe
Plus Robe

Please note that this floor plan is a guide only.
The information contained herein is not guaranteed.
Dimensions are approximate. Prospect purchasers
must rely on their own enquiries.



9645 1199
62 River Esplanade Victoria 3008
www.lucasre.com.au



Plans shown are only indicative of layout. Dimensions are approximate.

DOCKLANDS, VIC
202/60 Lorimer Street