



DOCKLANDS, VIC

83 South Wharf Drive

3 BED **2** BATH **2** CAR 

Private and luxurious dual level residence is simply special

Seamlessly blending elegance, sophistication, and quality contemporary style, and with a tranquil waterfront position matched by incredible parklands and river views, this luxurious 3 bedroom, 2 bathroom dual level apartment with 2 car spaces is truly memorable.

- ? This apartment has its own entry and frontage along with direct access to the 2 undercover car spaces and a storage room from the first floor
- ? Apartment has been meticulously kept and offers dazzling interiors that are flawless!
- ? Northern orientation allows for beautiful views of Wharf's Landing Park and the Yarra River
- ? Generous lounge and meals offers plenty of space for versatile living and is equipped with a serene electric fireplace

1450000

Contact:

Baden Lucas
03 9645 1199
0418 888 751

Type:

Apartment

Sold Date:

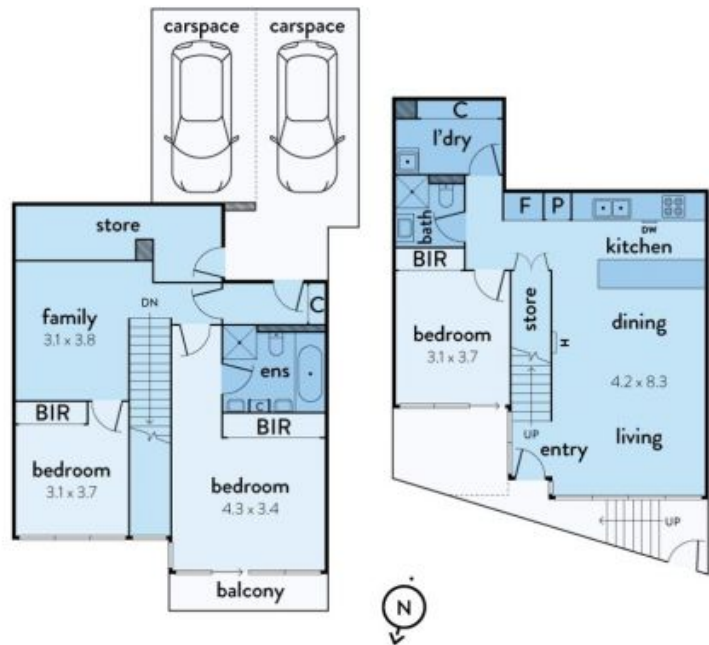
14/08/2020

<https://www.resbymirvac.com>

83 SOUTH WHARF DRIVE, DOCKLANDS



This floorplan is an artist's impression only, it contains information that we believe to be reliable however we cannot guarantee and accept no responsibility for the accuracy of information supplied. All dimensions are indicative and listed in metres. Interested parties should take their own measurements or engage the services of a licensed surveyor.



Plans shown are only indicative of layout. Dimensions are approximate.

DOCKLANDS, VIC
83 South Wharf Drive