



## DOCKLANDS, VIC

1802/50 Lorimer Street

3  
BED

2  
BATH

2  
CAR

RES

### Unforgettable Melbourne skyline views & immense space!

Delivering an exceptional combination of space, style and awe-inspiring views of the iconic Melbourne skyline, this breathtaking three bedroom, two bathroom Yarra's Edge oasis is an absolute triumph.

You won't believe the immense space offered by the vast lounge and dining zone until you actually walk through it. This large living area also incorporates a lush stone kitchen with island bench and stainless steel appliances, while the amazing balcony runs the entire length of the apartment and showcases the marvelous vistas day and night.

All bedrooms have balcony access and a share in the views including the prized master bed with an elegant ensuite, while the central bathroom is striking in its modern style. A Euro laundry, ducted heat/cool, video intercom, an oversized storage cage, 2 car spaces, and access to RekDek including gym, pool, spa, steam room and sauna are other features.

### Contact Agent

**Contact:** Baden Lucas  
03 9645 1199  
0418 888 751

**Type:** Apartment

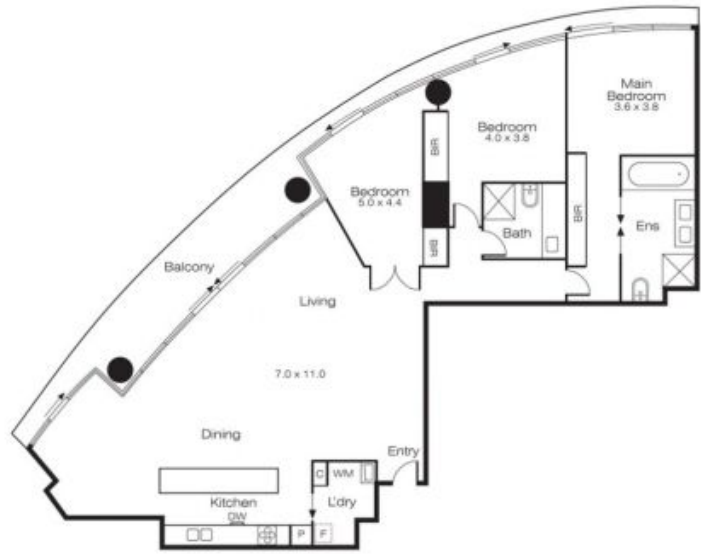
**Sold Date:** 04/02/2021

<https://www.resbymirvac.com>

# 1802/50 LORIMER STREET, DOCKLANDS



This floorplan is an artist's impression only, it contains information that we believe to be reliable however we cannot guarantee and accept no responsibility for the accuracy of information supplied. All dimensions are indicative and listed in metres. Interested parties should take their own measurements or engage the services of a licensed surveyor.



Plans shown are only indicative of layout. Dimensions are approximate.

**DOCKLANDS, VIC**  
1802/50 Lorimer Street