

ZETLAND, NSW

410/28 Ebsworth Street

2 BED **2** BATH **1** CAR 

Oversized 2-Bedroom Apartment with Parking in Heart of Green Square

This 120sqm, 4th floor Apartment features:

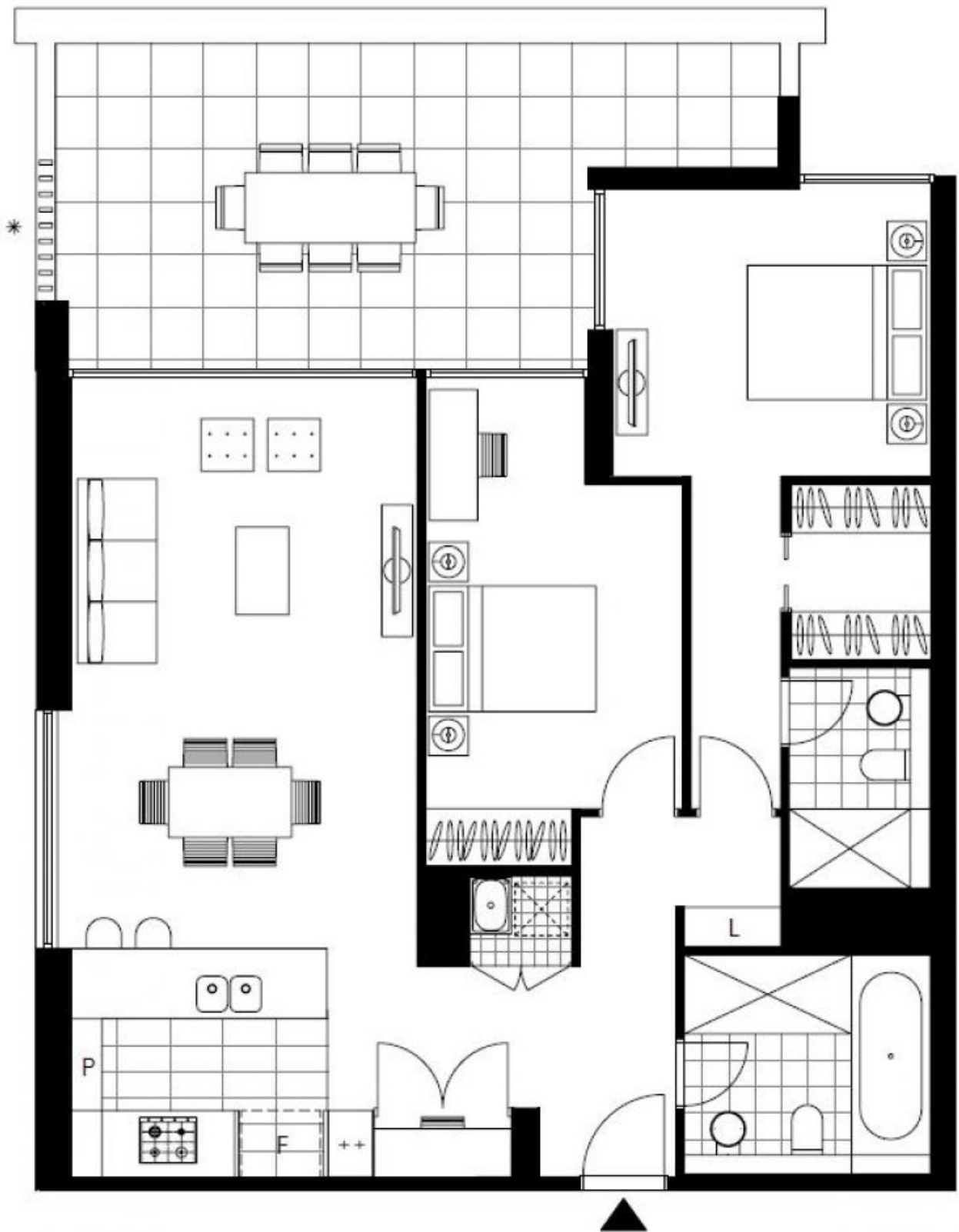
- Spacious bedrooms with generous built-in wardrobes
- Open-plan living and dining area, leading to the balcony
- Contemporary kitchen with stone benchtops and Smeg appliances
- Sleek bathrooms with plenty of vanity storage, bath in main
- Generous North-East facing balcony, great for entertaining
- Internal laundry with dryer included
- Study nook at entry, perfect for a home office
- Secure car space and storage cage included
- Ducted A/C, video intercom and NBN connectivity
- 300m to Woolworths, The Social Corner and Green Square Train Station (10mins to the City)

\$780 per week

Contact: Carmen Whiteley
02 8588 8888
0497 555 519

Type: Apartment
Date Available: 19/05/2020

Bond: \$3120
<https://www.resbymirvac.com>



Plans shown are only indicative of layout. Dimensions are approximate.

ZETLAND, NSW
410/28 Ebsworth Street