



**DOCKLANDS, VIC**  
906/1 Point Park Crescent

3 BED 2 BATH 2 CAR 

**Breathtaking Yarra Point living with stunning city and bay views**

The epitome of luxurious and generous Yarra Point living which exhibits stunning indoor and outdoor highlights along with breathtaking views of the CBD, marina, and sunsets to the west, this immaculate 3 bedroom + study, 2 bathroom, 2 car space apartment is one to remember.

- ? Enjoy an amazing 156 sqm (approx.) of total space and a fantastic corner location in the Yarra Point complex
- ? Stylish timber floors dominate the light-filled central lounge and meals zone which offers floor-to-ceiling windows which frame the amazing north, west, and east views
- ? Spacious balcony is semi-enclosed and will be idyllic to enjoy summer meals as you soak in views of sunsets, Yarra River, and the CBD

**\$1,275,000 - \$1,350,000**

**Contact:** Baden Lucas  
03 9645 1199  
0418 888 751

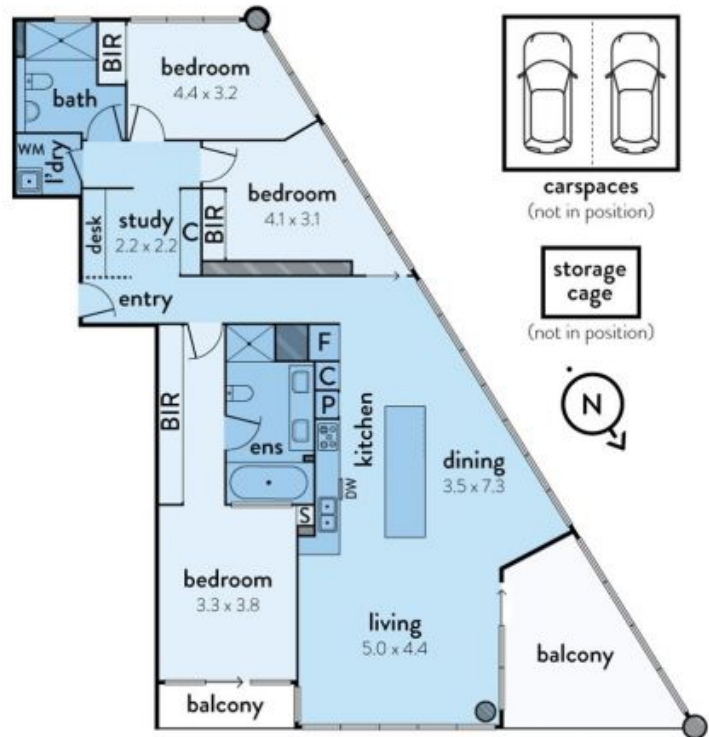
**Type:** Apartment  
**Sold Date:** 28/05/2020

<https://www.resbymirvac.com>

# 906/1 POINT PARK CRESCENT, DOCKLANDS



This floorplan is an artist's impression only, it contains information that we believe to be reliable however we cannot guarantee and accept no responsibility for the accuracy of information supplied. All dimensions are indicative and listed in metres. Interested parties should take their own measurements or engage the services of a licensed surveyor.



Plans shown are only indicative of layout. Dimensions are approximate.

**DOCKLANDS, VIC**  
906/1 Point Park Crescent