

ZETLAND, NSW
411/6 Ebsworth Street

2 BED **1** BATH



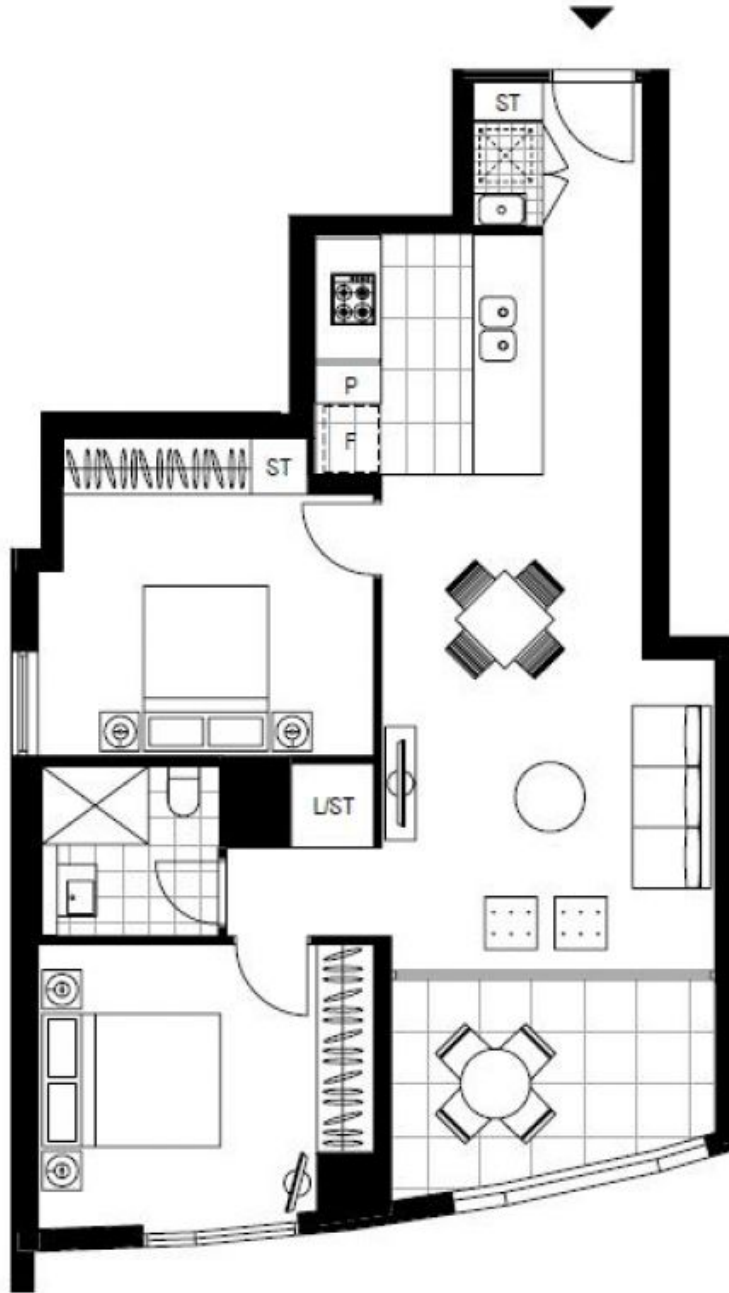
Sleek modern living near Green Square shops, rail and eateries

Offering a city-fringe lifestyle that promotes an active social life, this apartment boasts open plan indoor/outdoor entertaining in a vibrant locale. It's light-filled and modern with quality finishes. Amenities such as bus and rail transport, Woolworths and Green Square Library are at your door while many lively cafes and restaurants are within a brief stroll.

- • Roomy living/dining space flows to alfresco entertaining
- • Stone kitchen, gas stainless steel Miele cooking appliances
- • Generous bedrooms with built-in robes, fully tiled bathroom
- • Internal laundry, ducted air conditioning, security entrance
- • Elevated fourth floor position with lift access, storage cage
- • Superbly presented, ready to move straight into or rent out

Price Guide \$800,000

- Council Rates:** \$1,116/year (approx)
- Strata Rates:** \$4,160/year (approx)
- Contact:** Matthew Matthews
02 8588 8888
0418 266 590
- Type:** Apartment
- Sold Date:** 21/05/2021
- <https://www.resbymirvac.com>**



LEVEL 5

Plans shown are only indicative of layout. Dimensions are approximate.

ZETLAND, NSW
411/6 Ebsworth Street