



## GLEBE, NSW

701/170 Ross Street

2  
BED

2  
BATH

2  
CAR



### Deposit Taken!

This 110sqm, 7th floor Apartment has to offer:

North-facing 2-Bedroom Apartment in Vance, Harold Park

- Spacious bedrooms with generous built-in wardrobes
- Open-plan living and dining area, leading to the balcony
- Modern kitchen with stone benchtops and Miele appliances
- Ultramodern bathrooms with plenty of storage, bath in ensuite
- North East-facing balcony, perfect for entertaining
- Internal laundry with washer and dryer included
- Study nook at entry, perfect for a home office
- Two secure car spaces and one storage cage included
- Ducted A/C, video intercom and NBN connectivity
- 220m to the Heritage-listed Tramsheds, light rail station and public transport

### Deposit Taken

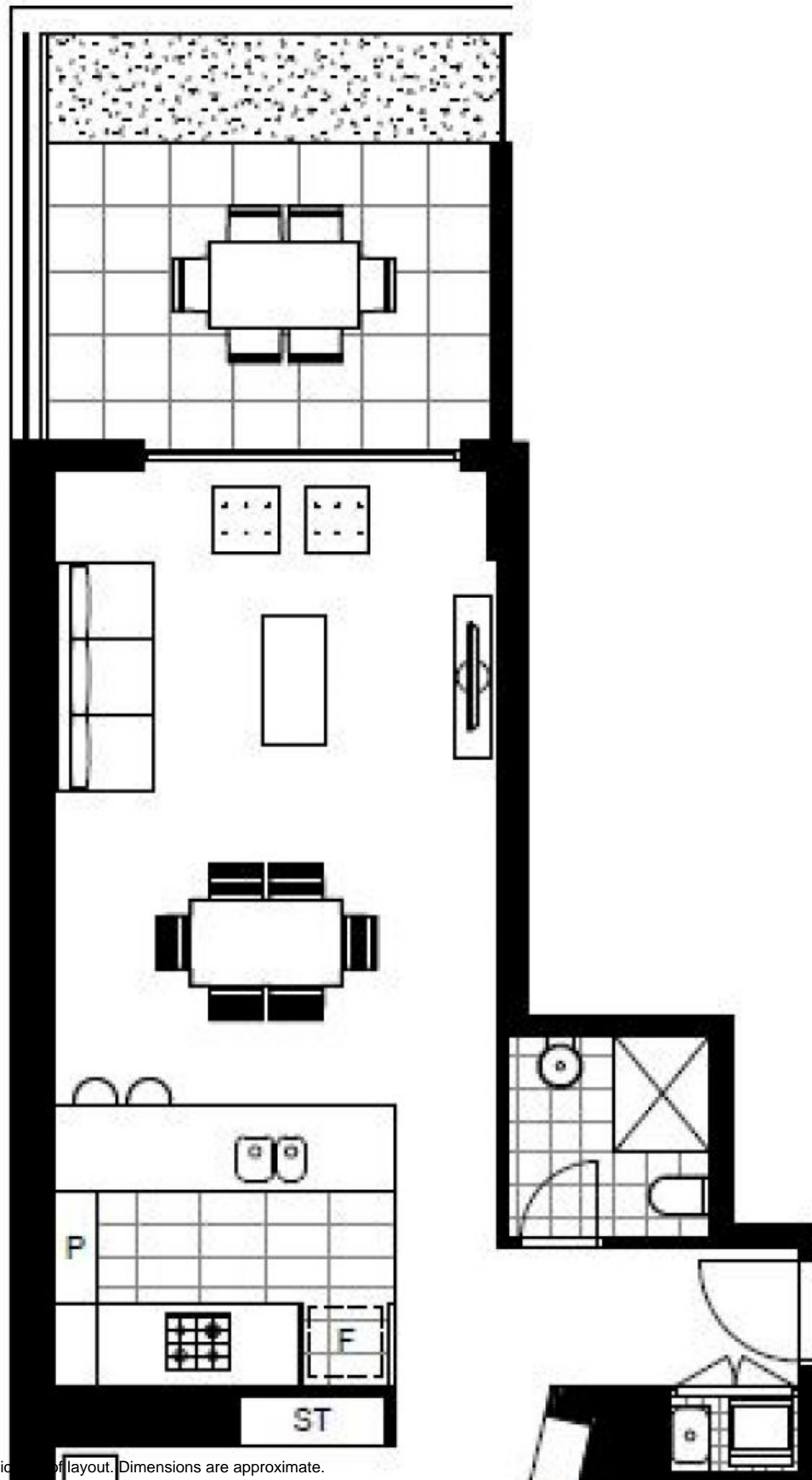
**Contact:** Matthew Matthews  
02 8588 8888  
0418 266 590

**Type:** Apartment

**Date Available:** 17/04/2020

**Bond:** \$3200

<https://www.resbymirvac.com>



Plans shown are only indicative of layout. Dimensions are approximate.

**GLEBE, NSW**  
701/170 Ross Street