

**ZETLAND, NSW**  
28 Ebsworth Street

1 1 1 RES  
 BED BATH CAR

**Spacious Open-Plan Apartment with Parking in Zetland**  
NOTE - INFORMATION BELOW REGARDING INSPECTIONS OF THIS PROPERTY

This 56sqm, 2nd-Floor Apartment features:

- Spacious open-plan bedroom with generous built-in wardrobe
- Well-appointed living and dining area, leading to the balcony
- Modern kitchen with stone benchtop and built-in appliances
- Stylish bathroom with plenty of vanity storage
- Generous balcony, great for entertaining
- Internal laundry with dryer included
- Secure car space and storage cage included
- Ducted A/C, video intercom and NBN connectivity

**DEPOSIT TAKEN - More Apartments Available!**

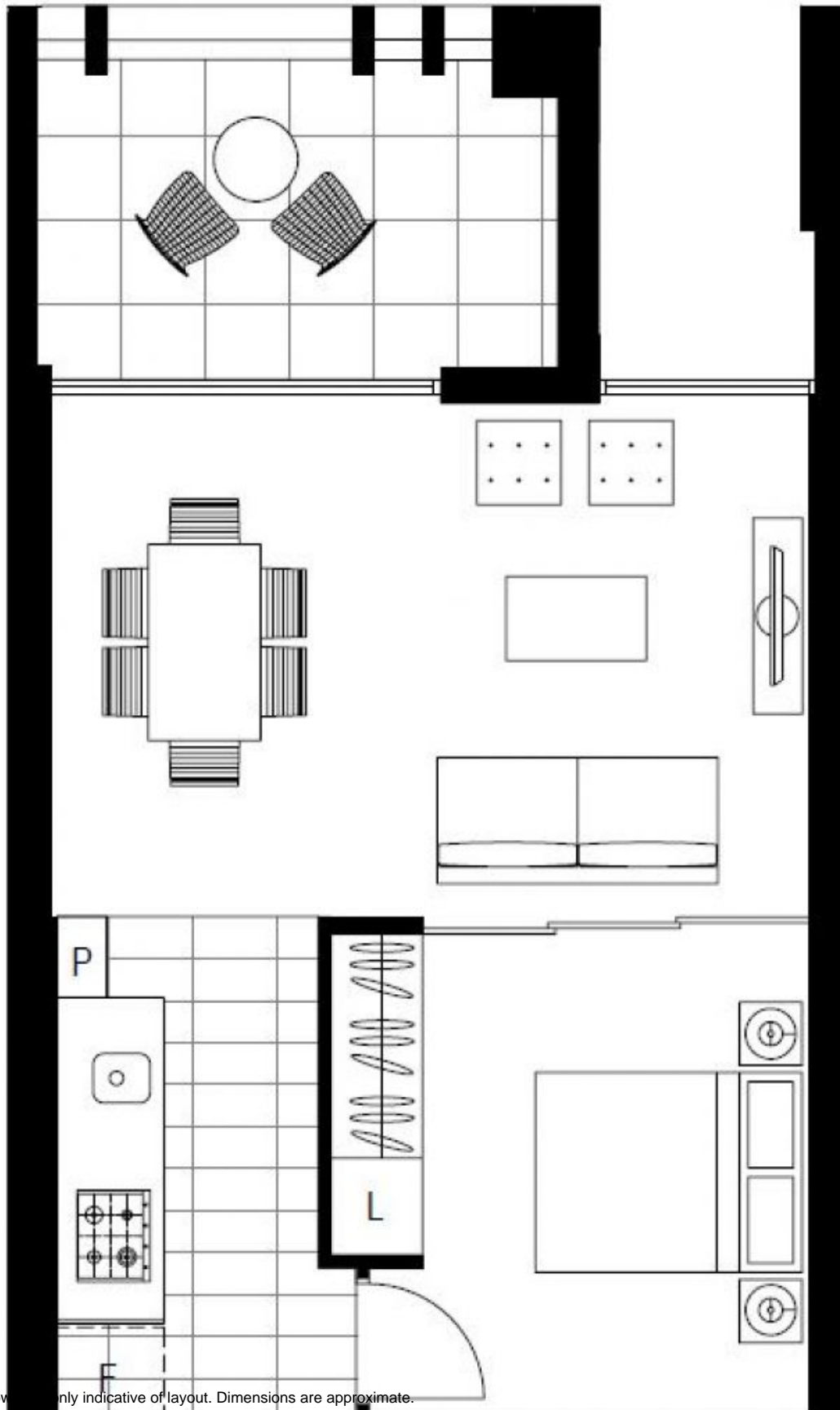
**Contact:** Carmen Whiteley  
02 8588 8888  
0497 555 519

**Type:** Apartment

**Date Available:** 13/04/2020

**Bond:** \$2120

<https://www.resbymirvac.com>



Plans shown are only indicative of layout. Dimensions are approximate.

**ZETLAND, NSW**  
28 Ebsworth Street

