

SYDNEY OLYMPIC PARK, NSW
11006/2 Figtree Drive

1 BED **1** BATH **1** CAR

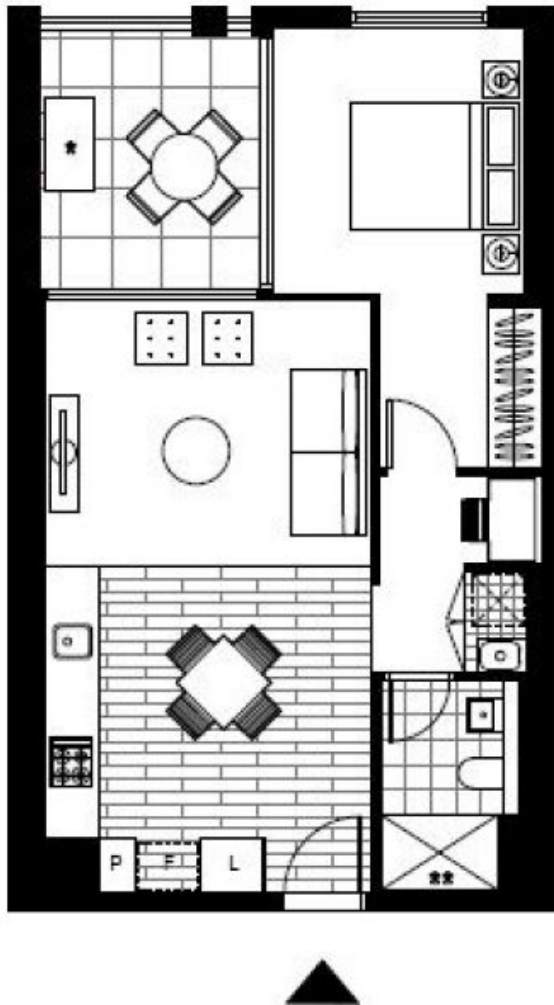


Deposit Taken

- This 59sqm, 1-Bedroom Plus Study Apartment features:
Available Now, One Bedroom with Parking In Verde
- Spacious bedroom with generous built-in wardrobes
 - Open-plan living and dining area, leading to the balcony
 - Contemporary kitchen with stone benchtops and Smeg appliances
 - Sleek bathrooms with generous vanity storage
 - North-facing Sunny balcony, perfect for entertaining
 - Internal laundry with dryer included
 - Study area included, perfect for a home office
 - Secure car space and storage cage included
 - Ducted A/C, video intercom and NBN connectivity
 - 550m to the Olympic Park Train Station, 650m to the Bicentennial Park, 700m to ANZ Stadium

Deposit Taken

Contact: Naz Sabzpouri
02 8588 8888
0401 545 440
Type: Apartment
Date Available: 26/03/2020
Bond: \$1920
<https://www.resbymirvac.com>



Plans shown are only indicative of layout. Dimensions are approximate.

SYDNEY OLYMPIC PARK, NSW
11006/2 Figtree Drive