

SYDNEY OLYMPIC PARK, NSW

11006/2 Figtree Drive

1
BED

1
BATH

1
CAR



Deposit Taken

This 59sqm, 1-Bedroom Plus Study Apartment features:
Available Now, One Bedroom with Parking In Verde

- Spacious bedroom with generous built-in wardrobes
- Open-plan living and dining area, leading to the balcony
- Contemporary kitchen with stone benchtops and Smeg appliances
- Sleek bathrooms with generous vanity storage
- North-facing Sunny balcony, perfect for entertaining
- Internal laundry with dryer included
- Study area included, perfect for a home office
- Secure car space and storage cage included
- Ducted A/C, video intercom and NBN connectivity
- 550m to the Olympic Park Train Station, 650m to the Bicentennial Park, 700m to ANZ Stadium

Deposit Taken

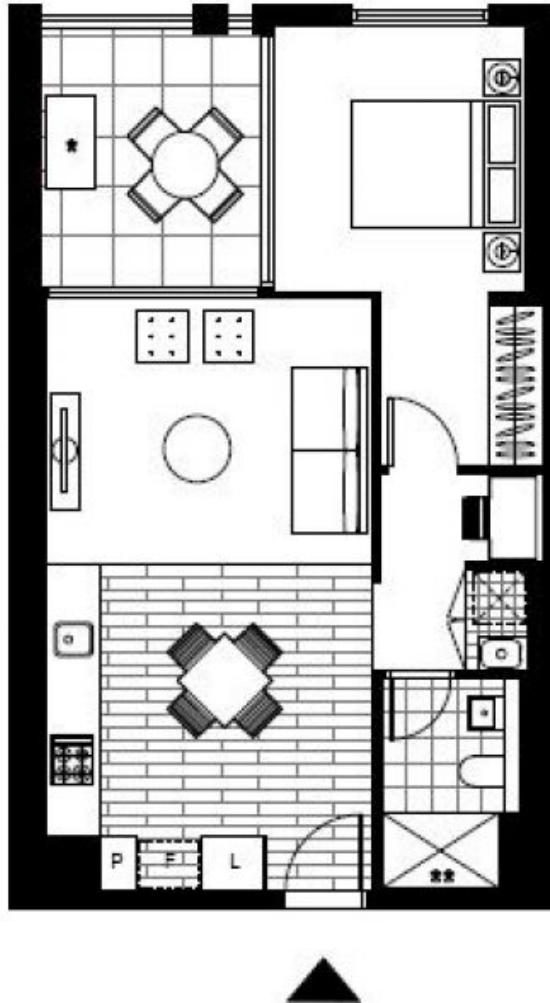
Contact: Naz Sabzpouri
02 8588 8888
0401 545 440

Type: Apartment

Date Available: 26/03/2020

Bond: \$1920

<https://www.resbymirvac.com>



Plans shown are only indicative of layout. Dimensions are approximate.

SYDNEY OLYMPIC PARK, NSW
11006/2 Figtree Drive