



DOCKLANDS, VIC

1505/1 Point Park Crescent

3
BED

2
BATH

1
CAR



Unfurnished 3-bedroom + study apartment with stunning river and city views

In a location just moments from Melbourne's cosmopolitan CBD and a short stroll from restaurants, cafes and shopping at Southbank, harbour side living has never been more complete!

Residents will enjoy the use of Yarra Point's business centre, BBQ grounds and gymnasium in addition to Mirvac's RekDek personal wellness facility comprising indoor pool, sauna, spa, steam room, and gym.

Apartment features:

? Floor to ceiling windows with views over Melbourne's CBD and Yarra River

? Luxurious ensuite with feature bathtub and double basin vanity

\$1,100 per week

Contact: Baden Lucas
03 9645 1199
0418 888 751

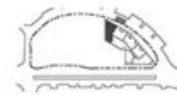
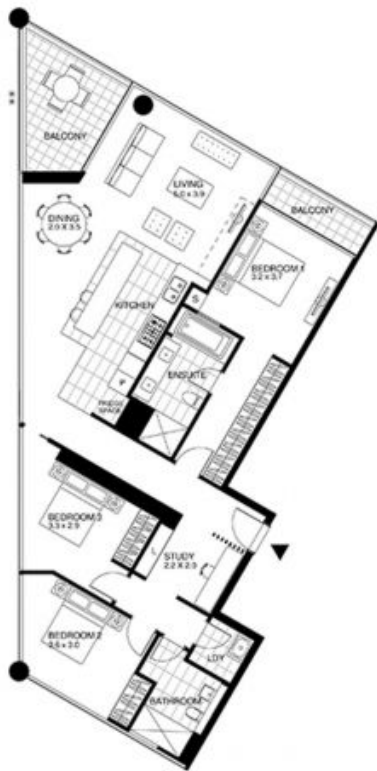
Type: Apartment

Date Available: 09/03/2020

Leased Date: 27/03/2020

Bond: \$6600

<https://www.resbymirvac.com>



3 Bedroom + Study Apartment

INTERNAL AREA - 142 m²
BALCONY AREA - 15 m²



Plans shown are only indicative of layout. Dimensions are approximate.

DOCKLANDS, VIC
1505/1 Point Park Crescent