



## DOCKLANDS, VIC

807/1 Point Park Crescent

**2** BED **1** BATH **1** CAR



### Yarra Point brilliance with a waterside location

Modern two bedroom residence located in the heart of the prestigious Yarra's Edge precinct. With access to Mirvac's state of the art Rek Dek facilities comprising of Pool, Spa, Gym and Sauna and also the lavish communal facilities within Yarra Point; this is a lifestyle second to none.

Expansive living and dining experience leading to adjoining balcony  
2 lavish bedrooms boasting views of the Yarra river

Internal area: 79m2  
Balcony area: 12m2  
Video intercom entrance

**\$605 per week**

**Contact:** Baden Lucas  
03 9645 1199  
0418 888 751

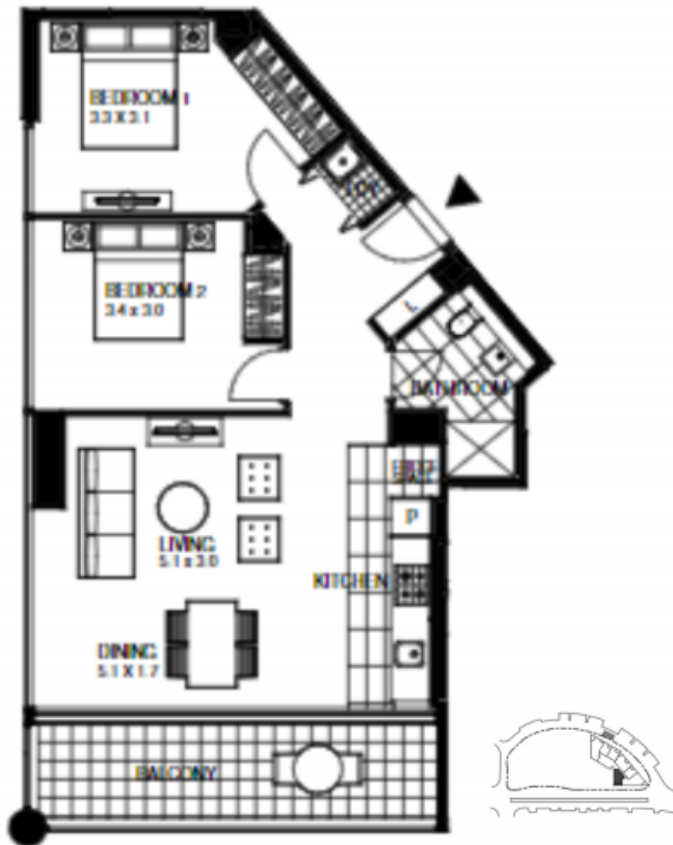
**Type:** Apartment

**Date Available:** 24/02/2020

**Leased Date:** 25/03/2020

**Bond:** \$3630

<https://www.resbymirvac.com>



## 807/1 Point Park Cres, DOCKLANDS

### Level 8

- Corner apartment
- Southern aspect with views over Port Phillip Bay and Yarra river
- Floorboards to living area
- Internal area: 79m<sup>2</sup>
- Balcony area: 12m<sup>2</sup>
- European laundry
- 1X spaces

For more information, please contact:

Aleiasha Clark  
0491 174 507  
[aleiasha.clark@resbymirvac.com](mailto:aleiasha.clark@resbymirvac.com)



Plans shown are only indicative of layout. Dimensions are approximate.

**DOCKLANDS, VIC**  
807/1 Point Park Crescent