



**EAST MELBOURNE, VIC**  
1002/296 Victoria Parade

**1** BED **1** BATH **1** CAR

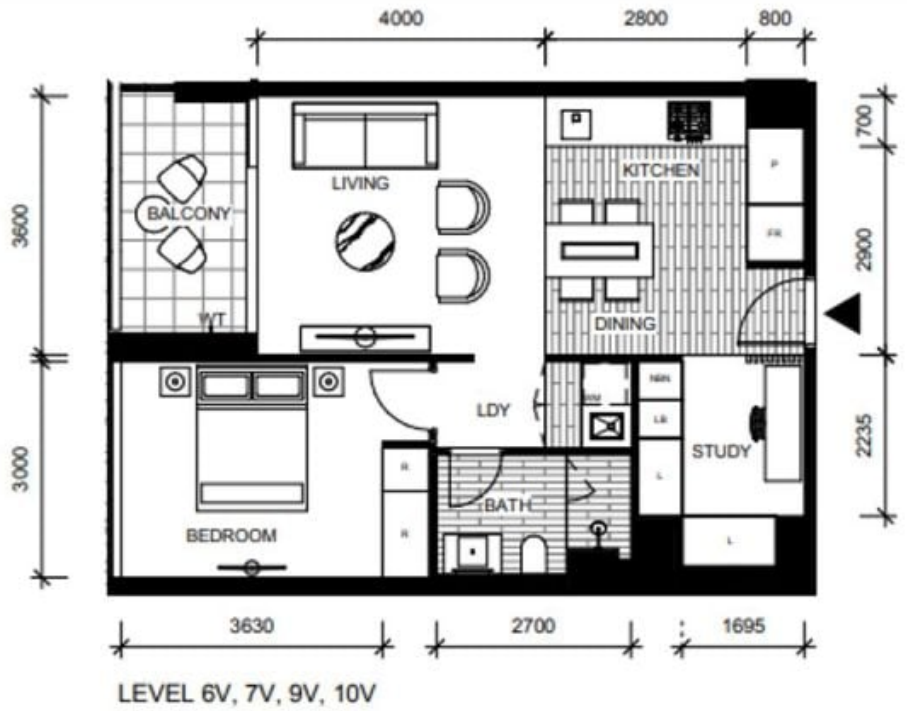


**The Eastbourne - 1 bedroom apartment plus study ? City views**

Superbly located in the sophisticated Eastbourne complex, Mirvac's Flagship development designed by Award-Winning Architects Bates & Smart. This chic one bedroom apartment delivers the very best in luxurious living. A sleek interior features a generous living area and kitchen with prestige Miele appliances and a sparkling bathroom and concealed laundry; plus one basement car space & storage locker.

- Apartment features:
- ? Bespoke design, quality construction and finishes
  - ? Internal space of 62m2
  - ? Separate study space
  - ? Balcony with views of Fitzroy Gardens, city, and Victoria Pde

**\$650 per week**  
**Contact:** Baden Lucas  
 03 9645 1199  
 0418 888 751  
**Type:** Apartment  
**Date Available:** 28/02/2020  
**Leased Date:** 03/03/2020  
**Bond:** \$3900  
<https://www.resbymirvac.com>



APT 6-02V  
 APT 7-02V  
 APT 9-02V  
 APT 10-02V

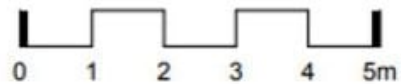
**LOCATION PLAN**



**FOR CONSTRUCTION DIMENSIONED PLAN**  
**APARTMENT**  
**1 BED 1 BATH + STUDY**



-  Non Trafficable Roof
-  Landscaping
-  Privacy Screen - Opaque Glass Type 1
-  Privacy Screen - Opaque Glass Type 2
-  Privacy Screen - Interstitial Louvre



Plans shown are only indicative of layout. Dimensions are approximate.

**EAST MELBOURNE, VIC**  
 1002/296 Victoria Parade