

EAST MELBOURNE, VIC

1404/296 Victoria Parade

2
BED

2
BATH

2
CAR



Fully-furnished Eastbourne Apartment - 2-bedroom corner apartment with bathtub

This Apartment is fully-furnished. The owner would prefer a 6 month lease term, although would consider longer lease term for the right tenant.

Eastbourne is an inner-city Eden, a heartbeat from the city, yet feeling like a million miles away. Located in East Melbourne, a neighbourhood of distinction, steeped in history and home to a privileged few.

Apartment features:

- ? Bespoke design, quality construction, and finishes
- ? Internal space of 137m2
- ? Large Balcony ? 13m2
- ? X2 Car spaces, side-by-side

\$1,200pw - Furnished

Contact: Baden Lucas
03 9645 1199
0418 888 751

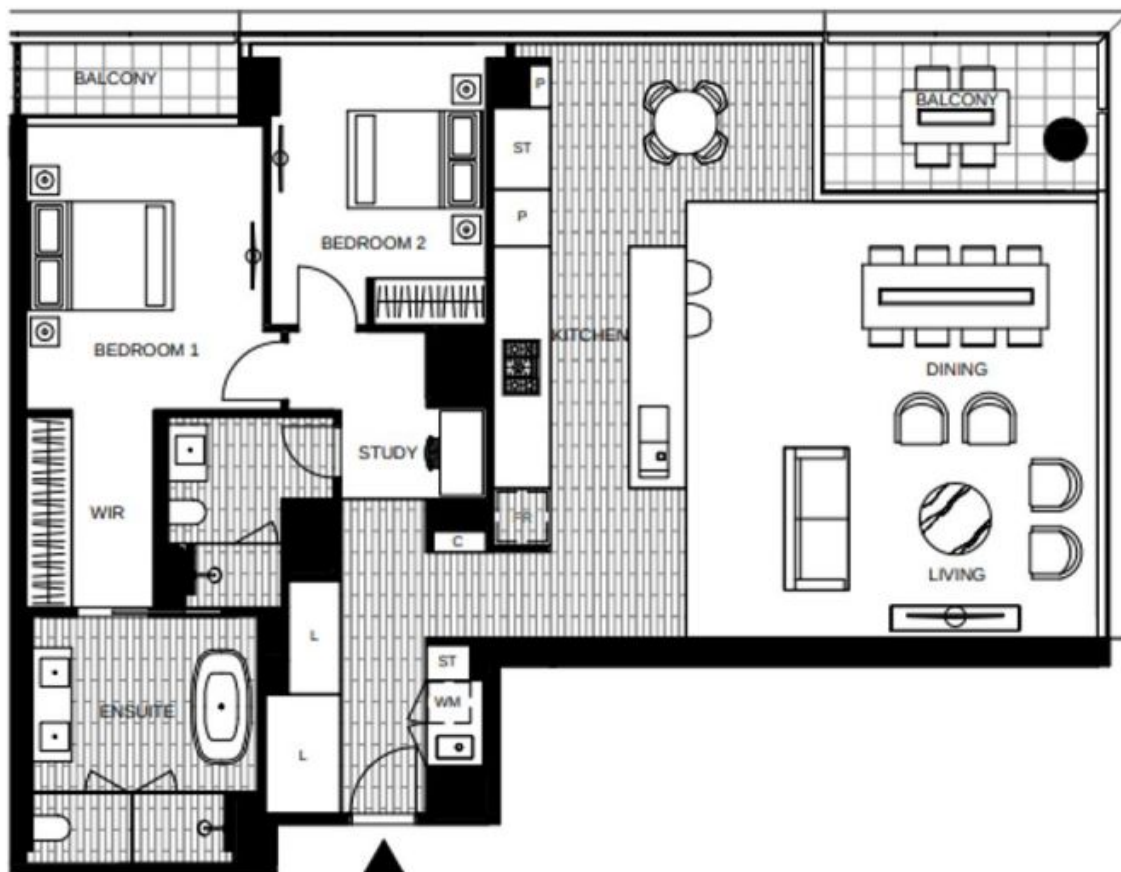
Type: Apartment

Date Available: 05/02/2020

Leased Date: 05/03/2020

Bond: \$5214

<https://www.resbymirvac.com>



LEVEL 11V, 12V, 13V, 14V

APT 11-04V
APT 12-04V
APT 13-04V
APT 14-04V

LOCATION PLAN



APARTMENT 2 BED 2 BATH + STUDY



Internal Area 138m²

Balcony Area 13m²

Total Area 151m²

Areas subject to final survey, area includes balcony and/or terrace where applicable. It excludes parking and external storage areas.

Plans shown are only indicative of layout. Dimensions are approximate.

EAST MELBOURNE, VIC
1404/296 Victoria Parade