

GLEBE, NSW

1202/1 Scotsman Street

2 BED **2** BATH **1** CAR



Connectivity and casual sophistication

Blending city connectivity and urban liveability, this apartment impresses with casual sophistication. Modern, easy-care interiors have open living zones bathed in light with the ideal flow to a balcony offering leafy streetscape views. Enjoy easy access to the CBD and a stroll to the Tramsheds, cafes, Jubilee Park, buses, and light rail.

- Mirvac build with extra height ceilings enhance the space and light
- Headturning breakfast bar, stone benchtops, Miele appliances, gas cooktop
- Double bedrooms with ensuite and dual built-in wardrobes for the master
- Alfresco adds extra living area and harnesses the fresh air and light
- Ducted air conditioning, gas hot water, NBN connected, video intercom

Price Guide \$1,120,000 - \$1,180,000

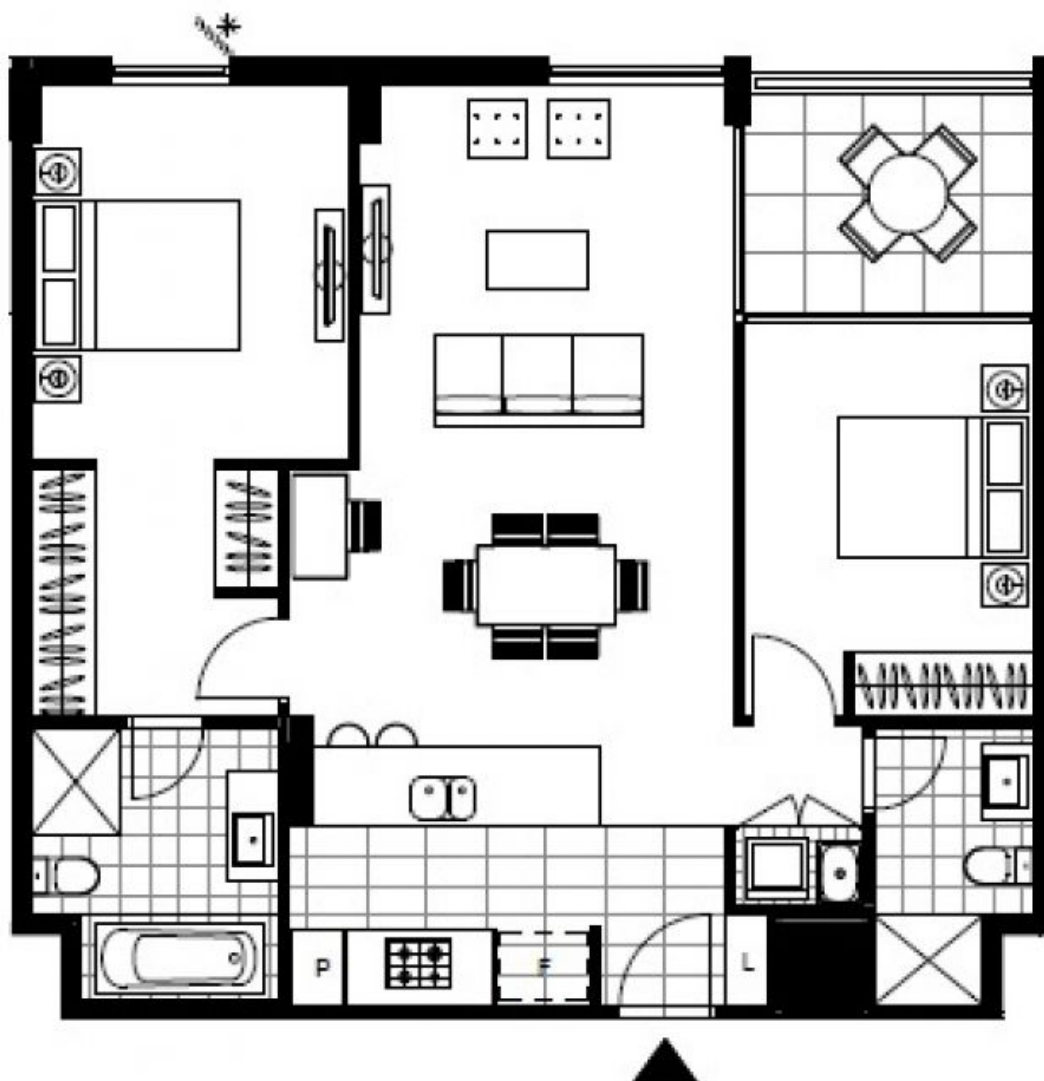
Contact: Matthew Matthews
02 8588 8888
0418 266 590

Type: Apartment

Date Available: 20/02/2020

Sold Date: 01/04/2021

<https://www.resbymirvac.com>



LEVEL 2

Plans shown are only indicative of layout. Dimensions are approximate.

GLEBE, NSW
1202/1 Scotsman Street