



ST LEONARDS, NSW

1509/486 Pacific Highway

2
BED

2
BATH

1
CAR



North-West Facing, 2-Bedroom Apartment with Parking in St Leonards Square

This 98sqm, 15th Floor Apartment features:

- Well-appointed bedrooms with floor to ceiling built-in wardrobes
- Open-plan living and dining area with generous ceiling height
- Modern kitchen with stone benchtop and built-in appliances
- Luxurious bathrooms with plenty of storage
- North-West facing balcony, perfect for entertaining
- Internal laundry with dryer included
- Secure car space and storage cage provided
- Ducted A/C, video intercom and NBN connectivity
- Resident access to the pool, spa, sauna, steam room, cinema room and outdoor terrace

Deposit Taken | Contact Christine 0459 222 085

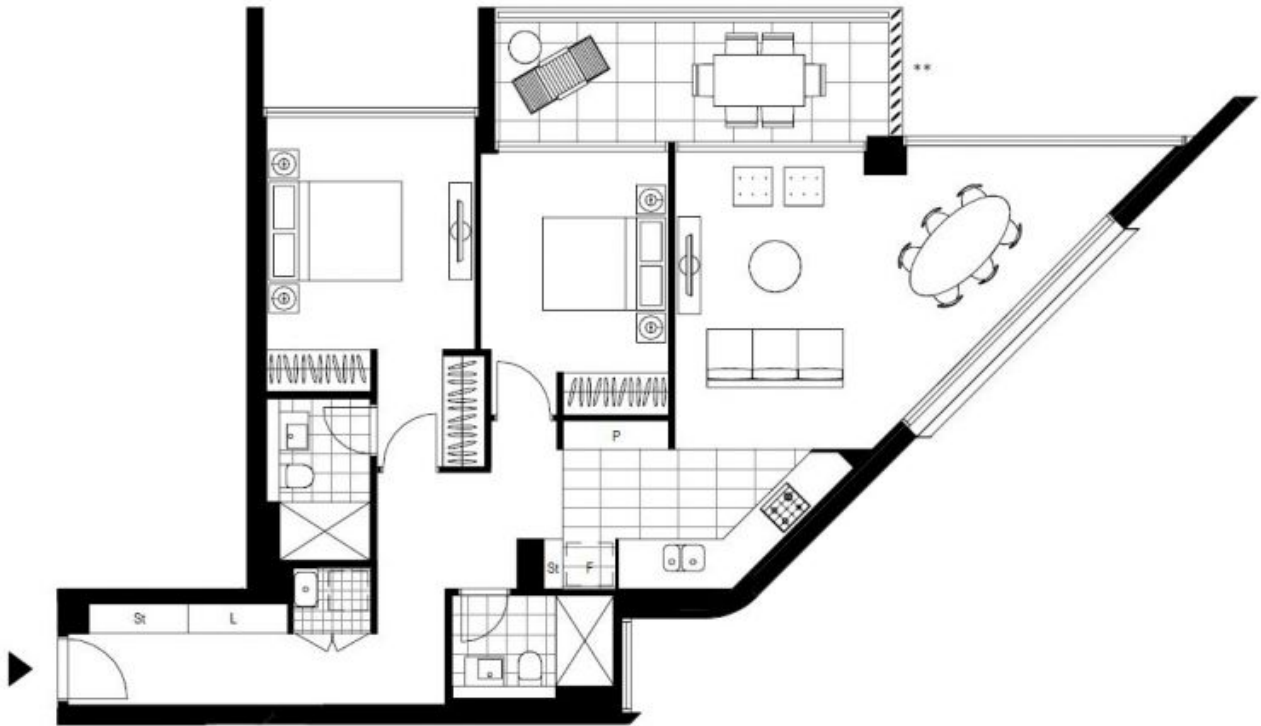
Contact: Christine Howison
02 8588 8888
0459 222 085

Type: Apartment

Date Available: 24/04/2021

Bond: \$3280

<https://www.resbymirvac.com>



Plans shown are only indicative of layout. Dimensions are approximate.

ST LEONARDS, NSW
1509/486 Pacific Highway