

GLEBE, NSW

508/147 Ross Street

1
BED

1
BATH



Deposit Taken | More are available: 02 8588 8888

This spacious, 56sqm 1-Bedroom Apartment features;

- 1-Bedroom Apartment in Harold Park with Park Views
- A large bedroom with generous built-in wardrobe
- Tiled living and dining area, leading to the balcony
- Modern kitchen with stone benchtop and Miele appliances
- Ultramodern bathrooms with plenty of storage
- Sunny balcony, overlooking the park
- Internal laundry with washer and dryer included
- Secure storage cage included
- Ducted A/C, video intercom and NBN connectivity
- 400m to the Heritage-listed Tramsheds, light rail station and public transport

Deposit Taken

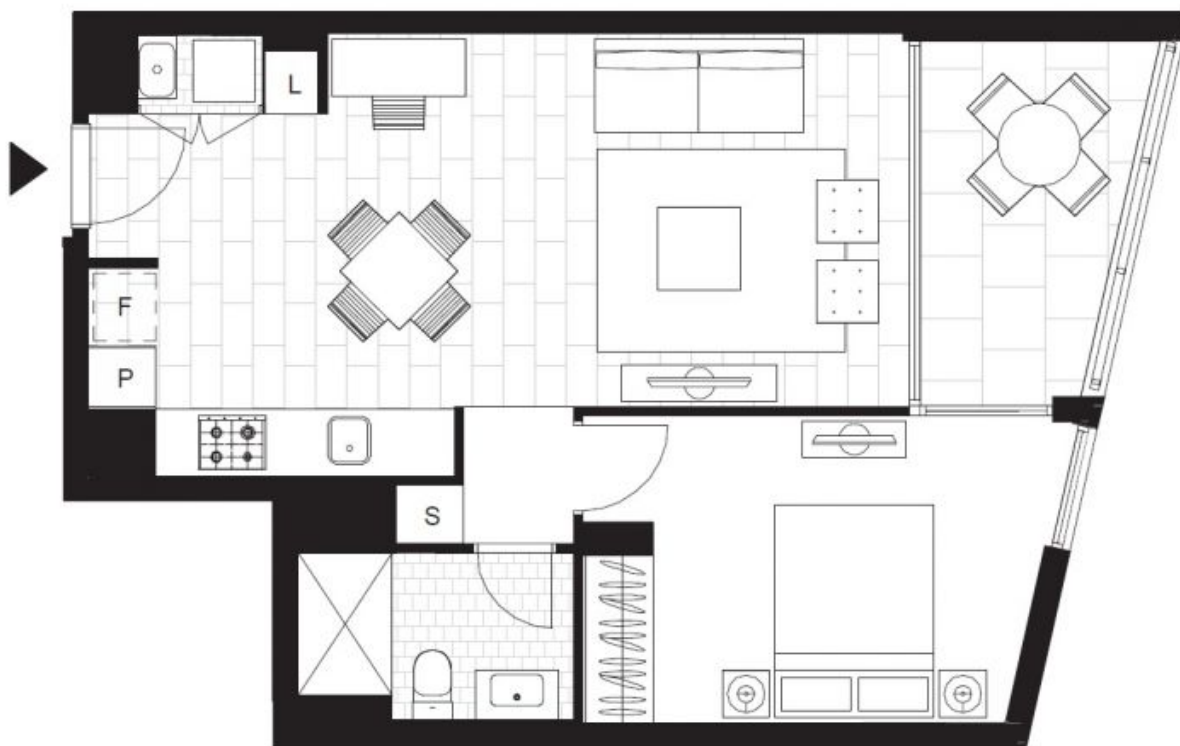
Contact: Matthew Matthews
02 8588 8888
0418 266 590
Stuart Nohra
02 8588 8888
0432 206 000

Type: Apartment

Date Available: 13/02/2020

Bond: \$2400

<https://www.resbymirvac.com>



Plans shown are only indicative of layout. Dimensions are approximate.

GLEBE, NSW
508/147 Ross Street