

ZETLAND, NSW

503/6 Ebsworth Street

1
BED

1
BATH



Near-New 1-Bedroom Apartment in Green Square

This 54sqm, 5th floor Apartment features:

- Spacious bedroom with generous built-in wardrobe
- Open-plan living and dining area, leading to the balcony
- Contemporary kitchen with stone benchtop and Smeg appliances
- Sleek bathroom with plenty of vanity storage
- Internal laundry with dryer included
- Secure storage cage included
- Ducted A/C, video intercom and NBN connectivity
- 300m to Woolworths, The Social Corner and Green Square Train Station (10mins to the City)

DEPOSIT TAKEN

Contact: Carmen Whiteley
02 8588 8888
0497 555 519

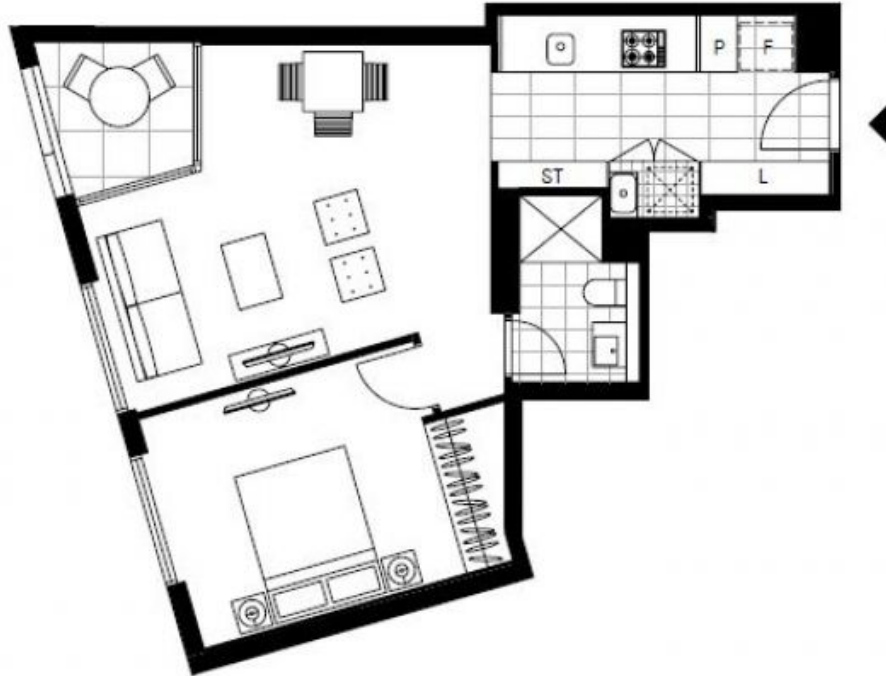
Type: Apartment

Date Available: 12/02/2020

Bond: \$2360

<https://www.resbymirvac.com>

For more information please contact Real Estate Services by Mirvac on 02 8588 8888 or email enquiries@resbymirvac.com - Your Onsite Agent!



LEVEL 5

Plans shown are only indicative of layout. Dimensions are approximate.

ZETLAND, NSW
503/6 Ebsworth Street