



MARRICKVILLE, NSW

603/18 Lilydale Street

1
BED

1
BATH



Brand New, East-Facing 1-Bedroom Apartment in Marrick & Co.

This 58sqm, 1-Bedroom Apartment features:

- Tiled, open-plan living and dining area
- Modern kitchen with stone benchtop and built-in appliances
- Well-appointed bedroom with built-in wardrobe
- Sleek bathroom with plenty of storage
- Spacious East-facing balcony with access from living and bedroom
- Internal laundry with dryer included
- Secure basement storage cage included
- Ducted A/C, video intercom and NBN connectivity
- Resident access to rooftop terrace with bbq area and pizza oven
- Onsite building management, 700m to Marrickville Train Station and 1km from Woolworths Marrickville

DEPOSIT TAKEN - More Apartments Available!

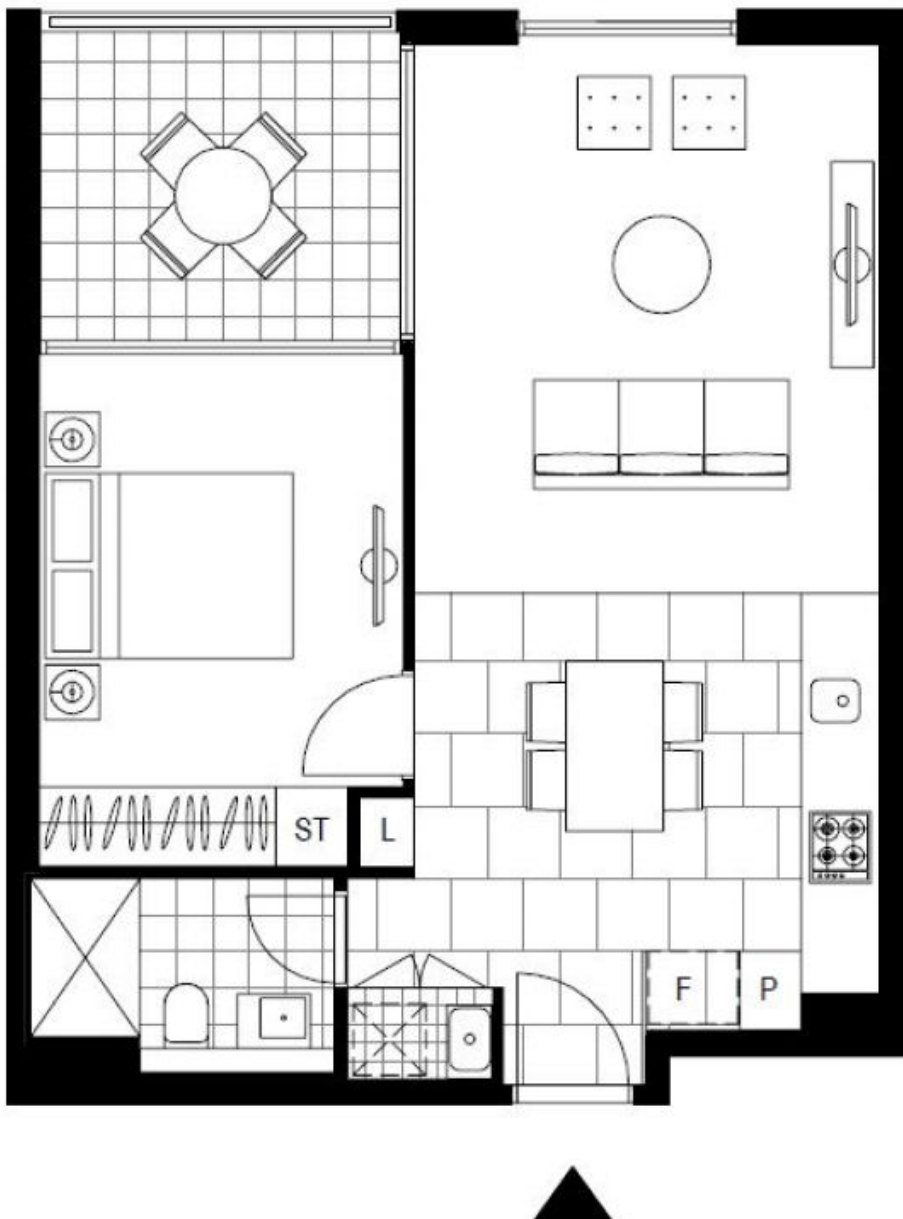
Contact: Carmen Whiteley
02 8588 8888
0497 555 519

Type: Apartment

Date Available: 25/01/2020

Bond: \$2200

<https://www.resbymirvac.com>



Plans shown are only indicative of layout. Dimensions are approximate.

MARRICKVILLE, NSW
603/18 Lilydale Street