



ZETLAND, NSW

308/8 Ebsworth Street

2 BED
1 BATH



Modern 2-Bedroom Apartment in Green Square

This 81sqm, 3rd floor Apartment features:

- Spacious bedrooms with generous built-in wardrobes
- Generous living and dining area, leading to private balcony
- Modern kitchen with stone benchtops and Smeg appliances
- Ultramodern bathroom with plenty of storage
- Internal laundry dryer included
- Secure storage cage included
- Resident access to courtyard with stunning city views
- Ducted A/C, video intercom and NBN connectivity
- 300m to Woolworths, The Social Corner and Green Square Train Station (10mins to the City)

DEPOSIT TAKEN - More Apartments Available!

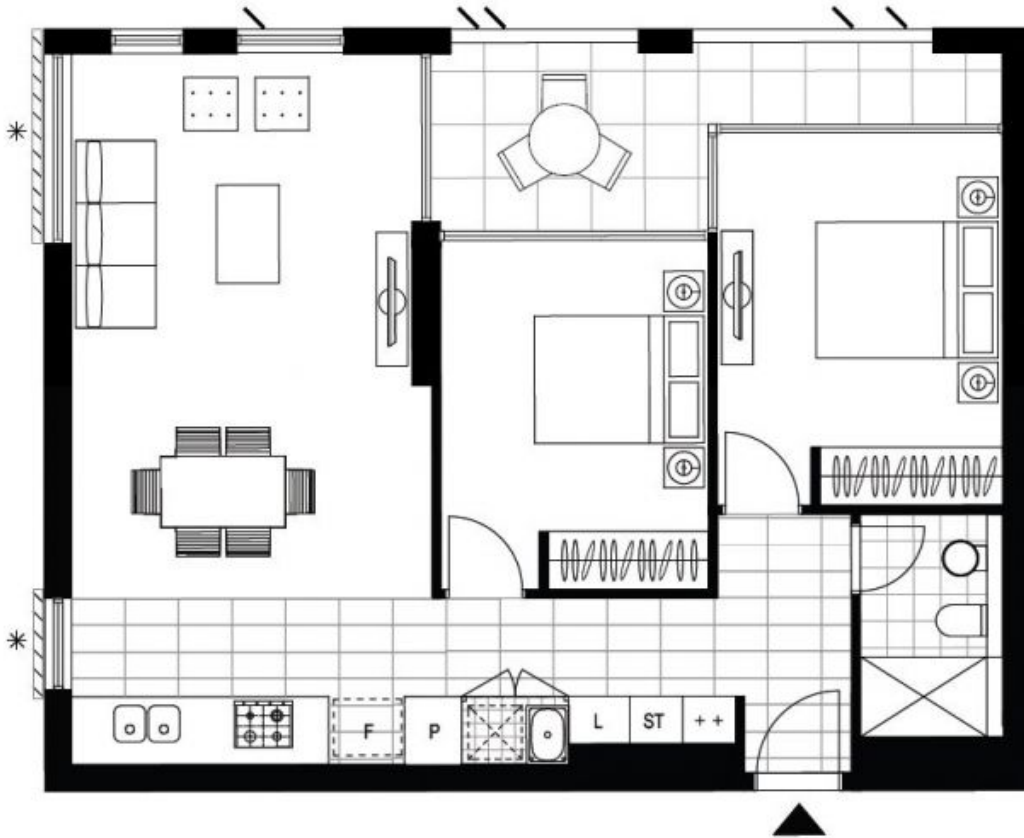
Contact: Carmen Whiteley
02 8588 8888
0497 555 519

Type: Apartment

Date Available: 24/01/2020

Bond: \$2800

<https://www.resbymirvac.com>



Plans shown are only indicative of layout. Dimensions are approximate.

ZETLAND, NSW
308/8 Ebsworth Street