



EAST MELBOURNE, VIC

804/296 Victoria Parade

2
BED

2
BATH

2
CAR



The Eastbourne ? Brand new corner apartment with spectacular views

Be the first to call this Eastbourne apartment home!

This corner apartment has spectacular views across Melbourne's CBD, northern suburbs, and Fitzroy Gardens ? it does not get much better than this.

Apartment features:

- ? Bespoke design, quality construction and finishes
- ? Internal space of 107m2
- ? Balcony ? 9m2
- ? X2 Car space
- ? Storage cage

\$1,250 per week

Contact: Baden Lucas
03 9645 1199
0418 888 751

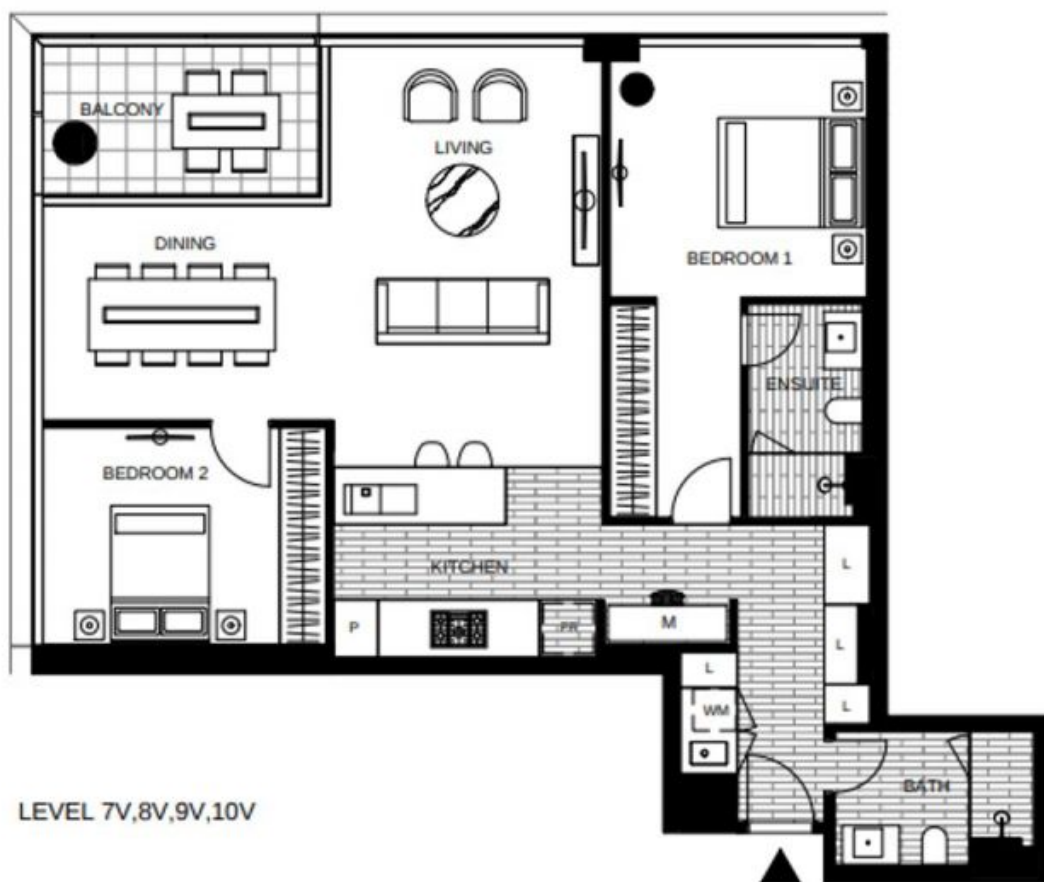
Type: Apartment

Date Available: 04/12/2019

Leased Date: 06/01/2020

Bond: \$7500

<https://www.resbymirvac.com>



APT 7-04V
APT 8-04V
APT 9-04V
APT 10-04V

LOCATION PLAN



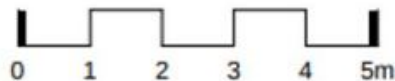
APARTMENT 2 BED 2 BATH + MEDIA



Internal Area 107m²
Balcony Area 9m²

Total Area 116m²

Areas subject to final survey, area includes balcony and/or terrace where applicable. It excludes parking and external storage areas.



Plans shown are only indicative of layout. Dimensions are approximate.

EAST MELBOURNE, VIC
804/296 Victoria Parade