



**DOCKLANDS, VIC**  
2005/1 Point Park Crescent

**3** BED   **2** BATH   **2** CAR



**Enjoy awe-inspiring summer sunsets in this bespoke modern lifestyle apartment**

Possessing utterly spectacular views of the city and sunsets over the bay, and showcasing bespoke modern additions that makes this apartment truly unique, this immaculate and luxurious 3 bedroom + study, 2 bathroom waterside residence is simply breathtaking.

- ? Enjoying a fantastic corner position on the 20th floor of Yarra Point
- ? Apartment measures 156 sqm (approx.) total
- ? Sleek designer floor tiles and natural light are the hallmarks of the generous north-east facing lounge and dining zone which delivers city, Yarra River, and Port Phillip Bay vistas
- ? State of the art kitchen includes a central custom grey stone dining bar, soft-close drawers, filtered hot/cold water tap, Miele appliances including 5 burner cooktop, and integrated fridge and freezer

**Contact Agent**

**Contact:** Baden Lucas  
03 9645 1199  
0418 888 751

**Type:** Apartment

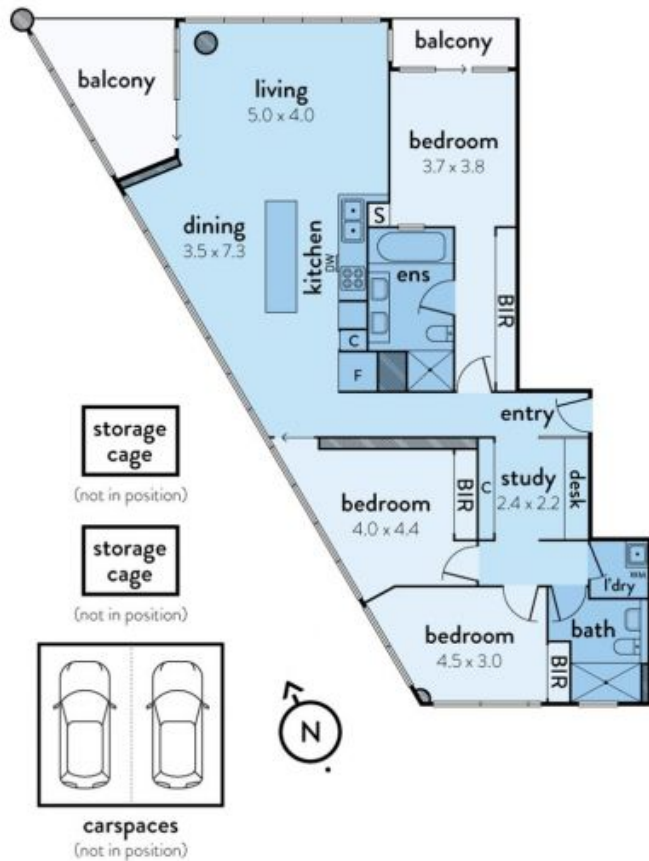
**Sold Date:** 27/02/2020

<https://www.resbymirvac.com>

# 2005/1 POINT PARK CRESCENT, DOCKLANDS



This floorplan is an artist's impression only, it contains information that we believe to be reliable however we cannot guarantee and accept no responsibility for the accuracy of information supplied. All dimensions are indicative and listed in metres. Interested parties should take their own measurements or engage the services of a licensed surveyor.



Plans shown are only indicative of layout. Dimensions are approximate.

**DOCKLANDS, VIC**  
2005/1 Point Park Crescent