

## ZETLAND, NSW

707/6 Ebsworth Street

**2**  
BED

**2**  
BATH



### 2-Bedroom Apartment with City Views and Study Nook

This 103sqm Apartment features:

- Spacious bedrooms with generous built-in wardrobes
- Well-appointed living and dining area leading to the balcony
- Modern kitchen with stone benchtops and Smeg appliances
- Sleek bathrooms with plenty of vanity storage, bath in ensuite
- North facing balcony with city views
- Internal laundry with dryer included
- Study nook off bedroom, perfect for a home office
- Secure storage cage included
- Ducted A/C, video intercom and NBN connectivity
- 300m to Woolworths, The Social Corner and Green Square Train Station (10mins to the City)

### DEPOSIT TAKEN

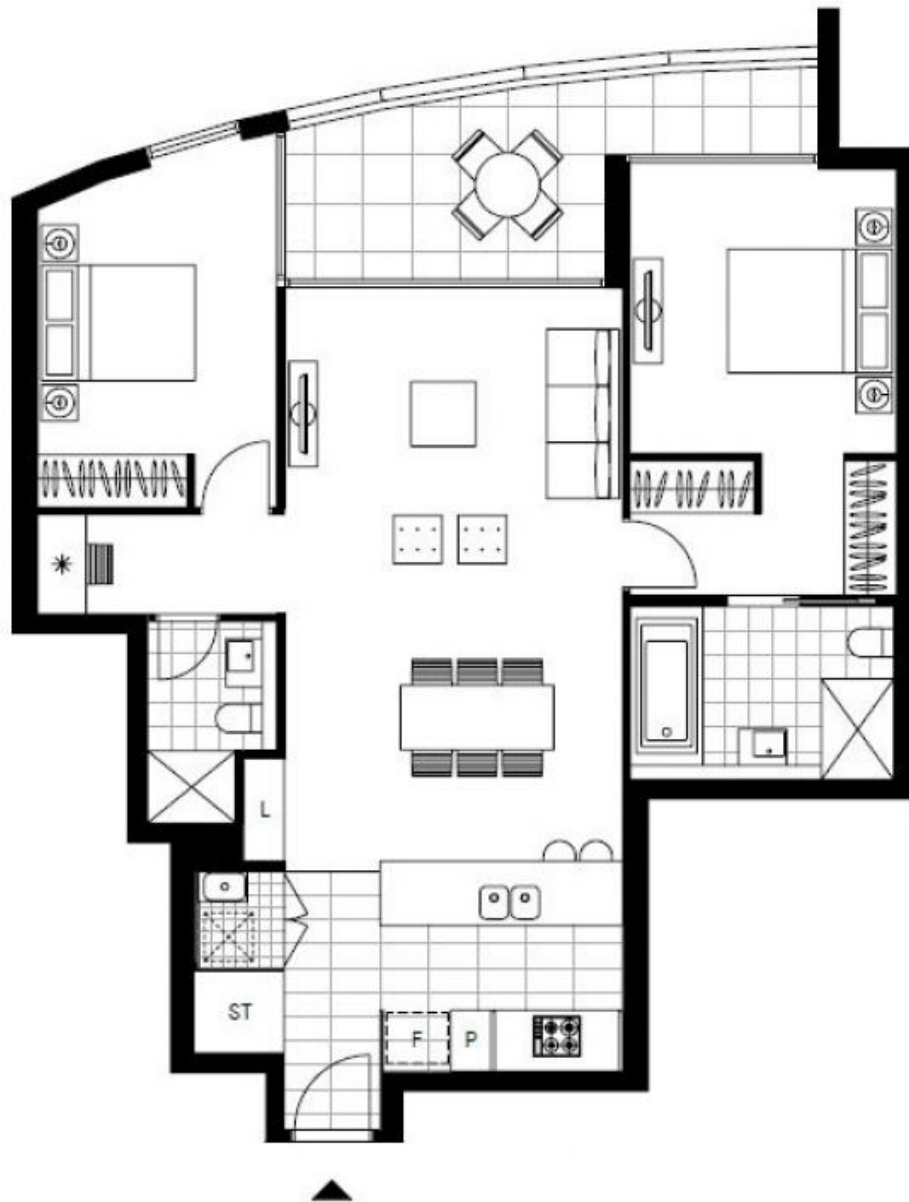
**Contact:** Carmen Whiteley  
02 8588 8888  
0497 555 519

**Type:** Apartment

**Date Available:** 11/12/2019

**Bond:** \$2920

<https://www.resbymirvac.com>



LEVEL 7

Plans shown are only indicative of layout. Dimensions are approximate.

**ZETLAND, NSW**  
707/6 Ebsworth Street