



DOCKLANDS, VIC

1608/60 Lorimer Street

1 BED **1** BATH **1** CAR



Large 1 bedroom in Yarra's Edge

Situated on the 16th floor of the much sought after 2nd tower of Yarra's Edge is this one bedroom apartment has the most amazing views.

Occupying an enviable position allowing you to enjoy a relaxing lifestyle on the edge of Melbourne's CBD, minutes from South Wharf, Southbank and Etihad Stadium.

The finishes and features are of the highest quality and the gourmet kitchen with stainless steel appliances and stone bench tops adjoins the open plan living room and opens onto the balcony perfect for entertaining or just relaxing. Other features include a stylish contemporary bathroom, one secure basement carspace, ducted airconditioning / heating, heated indoor pool, gymnasium, spa and sauna.

\$500 per week

Contact: Baden Lucas
03 9645 1199
0418 888 751

Type: Apartment

Date Available: 21/11/2019

Leased Date: 10/12/2019

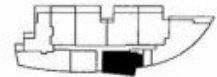
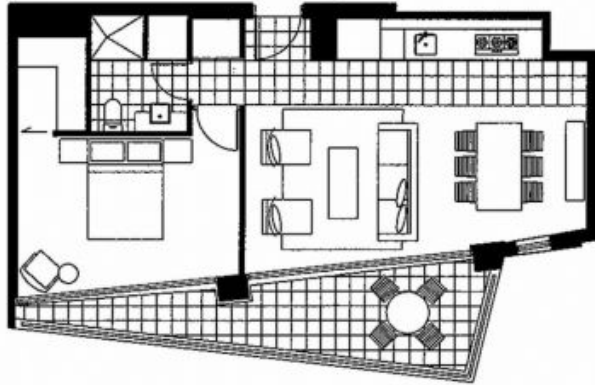
Bond: \$3000

<https://www.resbymirvac.com>

Living 4.0 x 4.1
Dining 2.9 x 3.7

Bedroom 1 3.0 x 4.5 Plus Robe

Please note that this floor plan is a guide only.
The information contained herein is not guaranteed.
Dimensions are approximate. Prospect purchasers
must rely on their own enquiries.



Plans shown are only indicative of layout. Dimensions are approximate.

DOCKLANDS, VIC
1608/60 Lorimer Street