



RES real estate services by mirvac



RES real estate services by mirvac



**EAST MELBOURNE, VIC**  
515/280 Albert Street

**1** BED **1** BATH



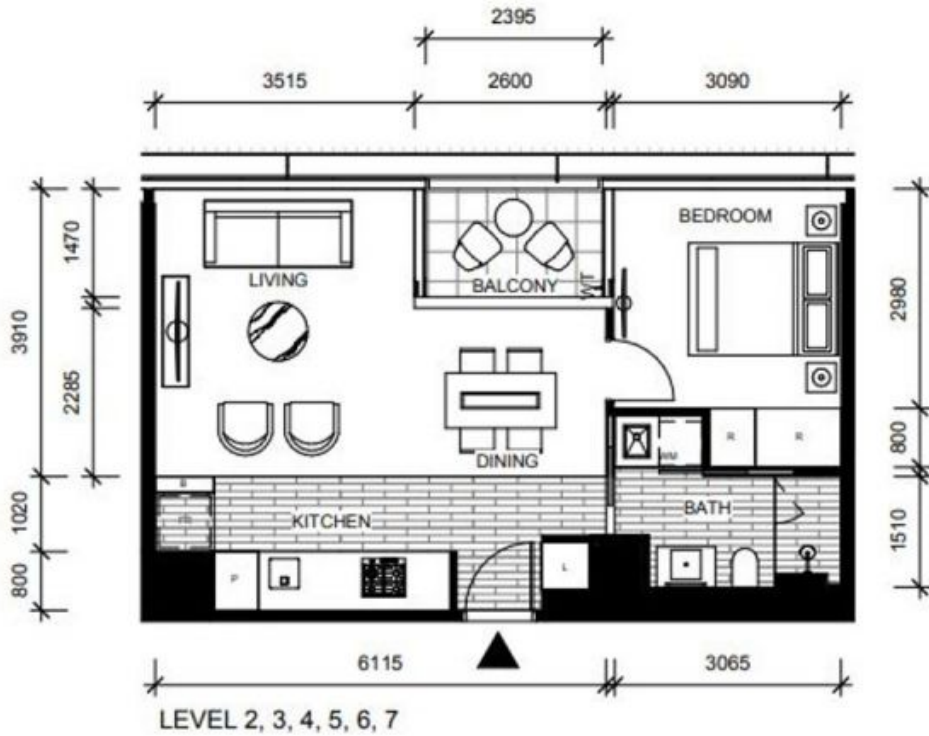
**The Eastbourne - 1 Bedroom Apartment with integrated fridge ? Unfurnished**

Unfurnished apartment. Images and photos are for illustrative purposes only

Quality is paramount in this superb one bedroom apartment boasting a prestigious location in The Eastbourne - East Melbourne's finest apartment complex positioned opposite Fitzroy Gardens just a heartbeat from the City.

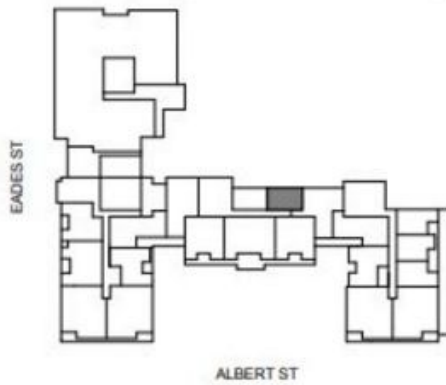
The stylish interior includes a generous living area with prestige Miele appliances and integrated fridge/freezer, generous balcony, a sparkling bathroom and concealed laundry; plus one storage locker

**\$550 per week**  
**Contact:** Baden Lucas  
 03 9645 1199  
 0418 888 751  
**Type:** Apartment  
**Date Available:** 25/11/2019  
**Leased Date:** 29/11/2019  
**Bond:** \$3300  
<https://www.resbymirvac.com>



- APT 2-15
- APT 3-15
- APT 4-15
- APT 5-15
- APT 6-15
- APT 7-15

**LOCATION PLAN**



**FOR CONSTRUCTION DIMENSIONED PLAN**  
**APARTMENT**  
**1 BED 1 BATH**



- Non Trafficable Roof
  - Landscaping
  - Privacy Screen - Opague Glass Type 1
  - Privacy Screen - Opague Glass Type 2
  - Privacy Screen - Interstitial Louvre
- 0 1 2 3 4 5m

Plans shown are only indicative of layout. Dimensions are approximate.

**EAST MELBOURNE, VIC**  
 515/280 Albert Street