



AINTREE, VIC

30 Cobblefield Street

3 BED **2** BATH **1** CAR



Brand new 3-bedroom townhouse in Woodlea Estate

Quality is paramount in this superb three bedroom townhouse boasting prime location within Woodlea Estate.

Townhouse features:

- ? Bespoke design, quality construction and finishes
- ? Kitchen with island bench and walk-in pantry
- ? Stainless steel Smeg appliances and integrated dishwasher
- ? Large fridge space with waterpoint connection
- ? Large living space & separate dining area
- ? Landscaped courtyard ? perfect for entertaining
- ? Generous study
- ? Generous laundry with great amount of storage
- ? Master bedroom with ensuite and balcony

\$380 per week

Contact: Baden Lucas
03 9645 1199
0418 888 751

Type: House

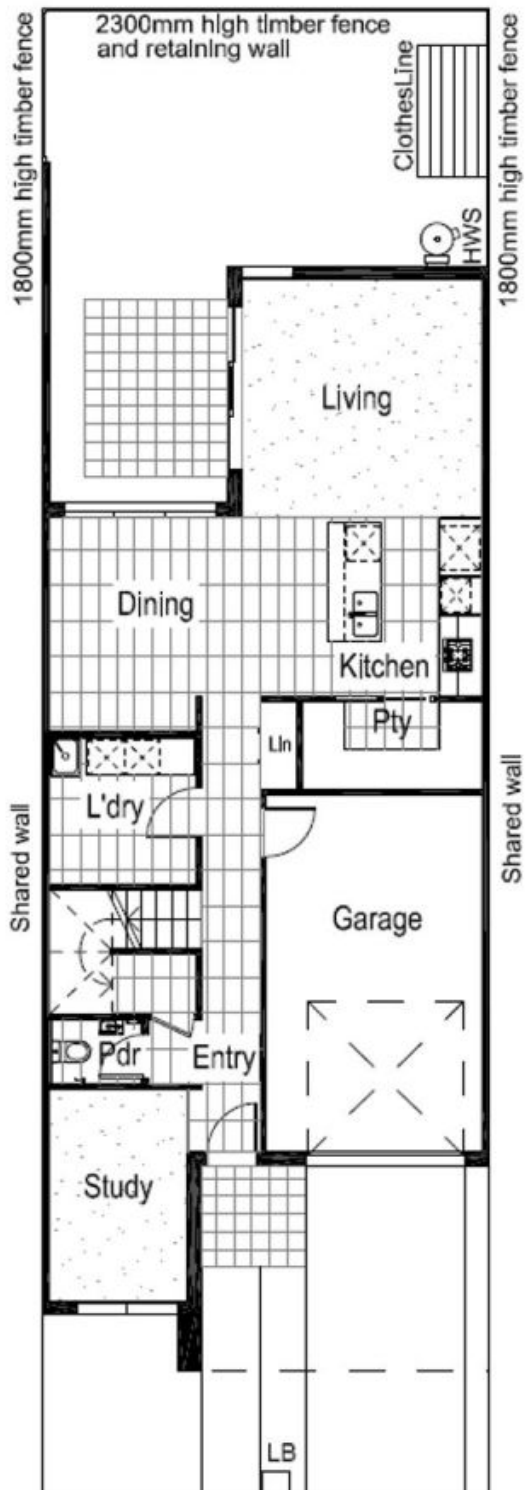
Date Available: 29/11/2019

Leased Date: 19/12/2019

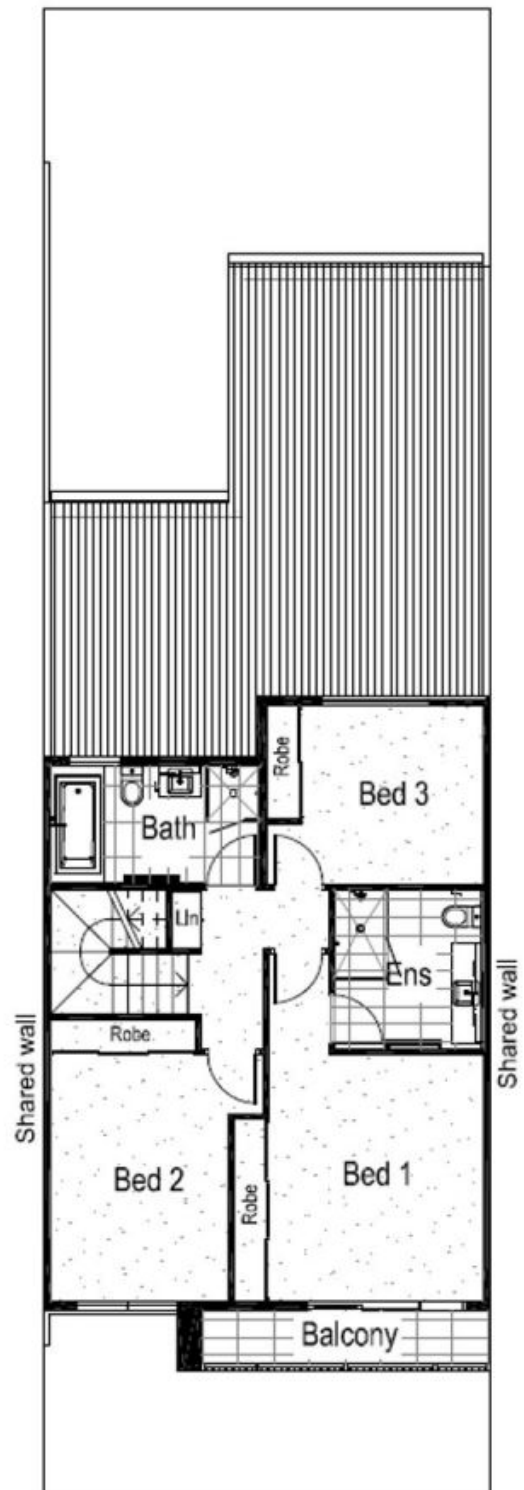
Bond: \$1651

<https://www.resbymirvac.com>

GROUND FLOOR



FIRST FLOOR



Plans shown are only indicative of layout. Dimensions are approximate.

AINTREE, VIC
30 Cobblefield Street