



MARRICKVILLE, NSW

408/18 Lilydale Street

2 **2** **1** 
BED BATH CAR

Stylish 2-Bedroom Apartment with City Views and Parking in Marrick & Co.

This near-new, 90sqm apartment features:

- Spacious open-plan living and dining area
- Modern kitchen with stone benchtops and built-in Smeg appliances
- Well-appointed bedrooms with built-in wardrobes
- Sleek bathrooms with plenty of storage, bath in ensuite
- North-facing entertainers' balcony with city views
- Private balcony off second bedroom
- Internal laundry with dryer included
- Secure basement carspace and storage cage included
- Ducted A/C, video intercom and NBN connectivity
- Resident access to rooftop terrace with bbq area and pizza oven

DEPOSIT TAKEN - More apartments available!

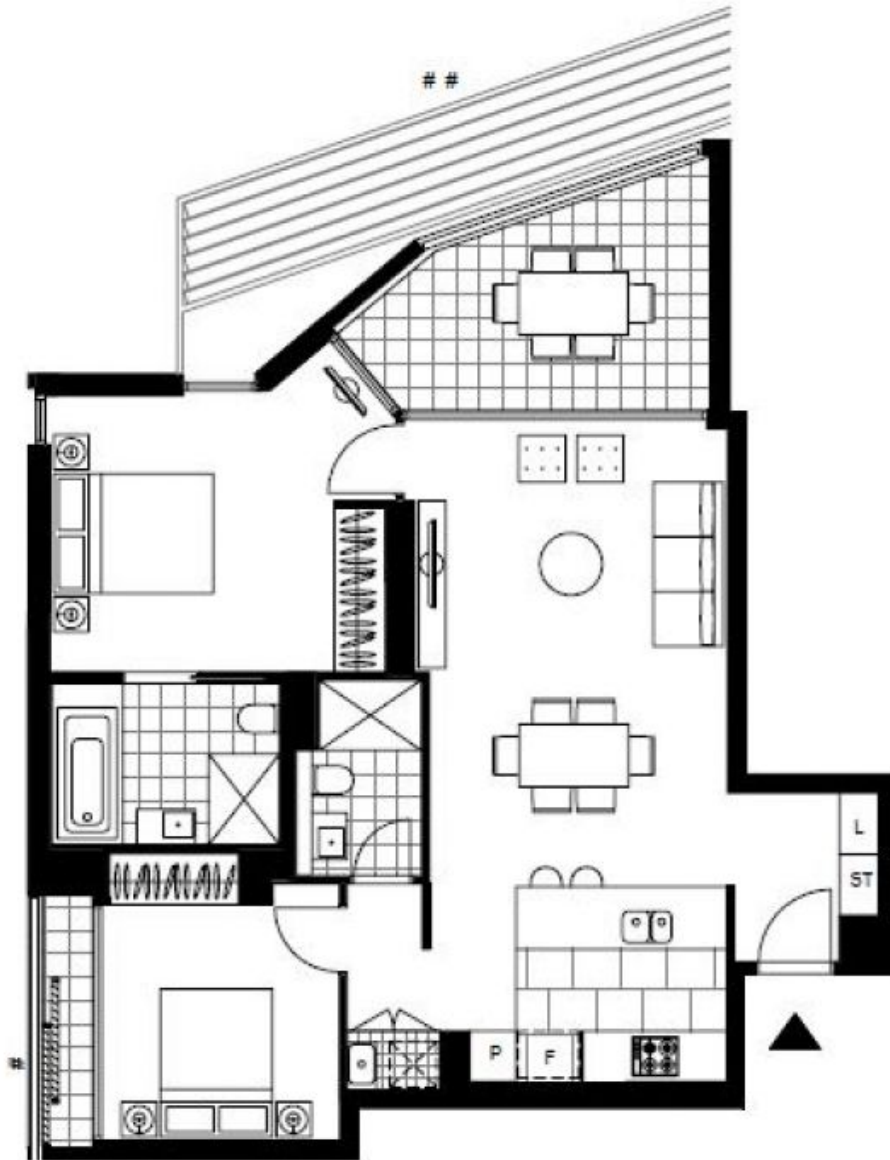
Contact: Carmen Whiteley
02 8588 8888
0497 555 519

Type: Apartment

Date Available: 18/02/2021

Bond: \$3000

<https://www.resbymirvac.com>



Plans shown are only indicative of layout. Dimensions are approximate.

MARRICKVILLE, NSW
408/18 Lilydale Street