

ZETLAND, NSW

1505/6 Ebsworth Street

2 BED **2** BATH **1** CAR 

Oversized 2-Bedroom Apartment with City Views and Parking

This 103sqm, 15th floor Apartment features:

- Spacious bedrooms with generous built-in wardrobes
- Open-plan living and dining area, perfect for entertaining
- Modern kitchen with stone benchtops and Smeg appliances
- Sleek bathrooms with plenty of vanity storage, bath in ensuite
- Generous North-facing balcony with uninterrupted city views
- Internal laundry with dryer included
- Study nook with built-in desk, perfect for a home office
- Secure car space and storage cage included
- Ducted A/C, video intercom and NBN connectivity
- 300m to Woolworths, The Social Corner and Green Square Train Station (10mins to the City)

DEPOSIT TAKEN - More apartments available!

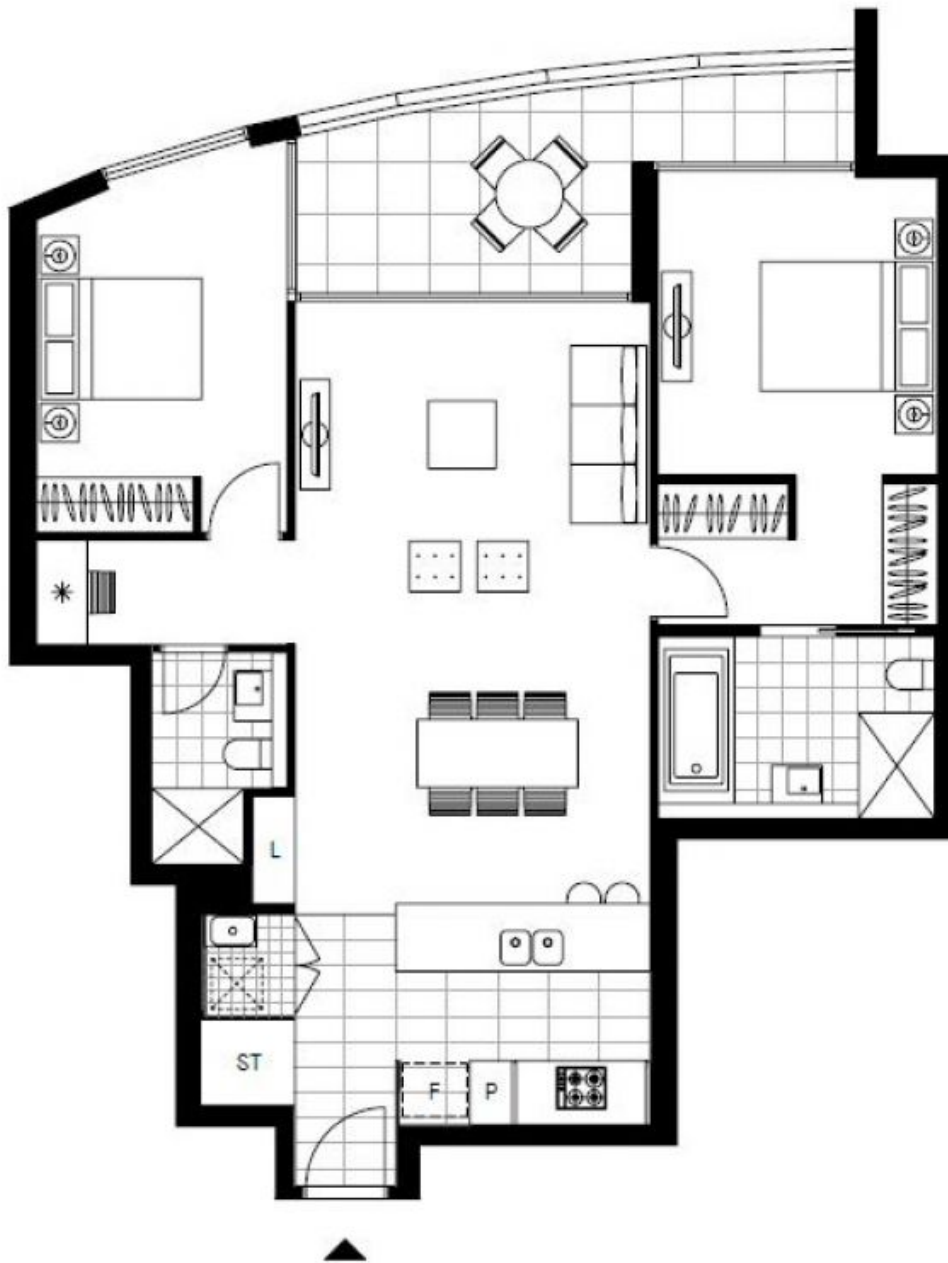
Contact: Carmen Whiteley
02 8588 8888
0497 555 519

Type: Apartment

Date Available: 18/03/2021

Bond: \$3000

<https://www.resbymirvac.com>



Plans shown are only indicative of layout. Dimensions are approximate.

ZETLAND, NSW
1505/6 Ebsworth Street