



**ST LEONARDS, NSW**  
2609/472 Pacific Highway

**2** BED **2** BATH **1** CAR



**North Facing Two Bedroom | Resident Access to Pool + Spa**

This 97sqm, 2-Bedroom Apartment features:

- Large bedrooms with built-in wardrobes
- Open-plan living and dining area with generous ceiling height
- Stylish kitchen with stone benchtop and Miele appliances
- Modern bathrooms with plenty of storage
- Internal laundry with dryer included
- Secure car space and storage cage included
- Ducted A/C, video intercom and NBN connectivity
- Resident access to the pool, spa, sauna, steam room and outdoor terrace
- St Leonards Square will house a fitness centre and concierge facility

**DEPOSIT TAKEN**

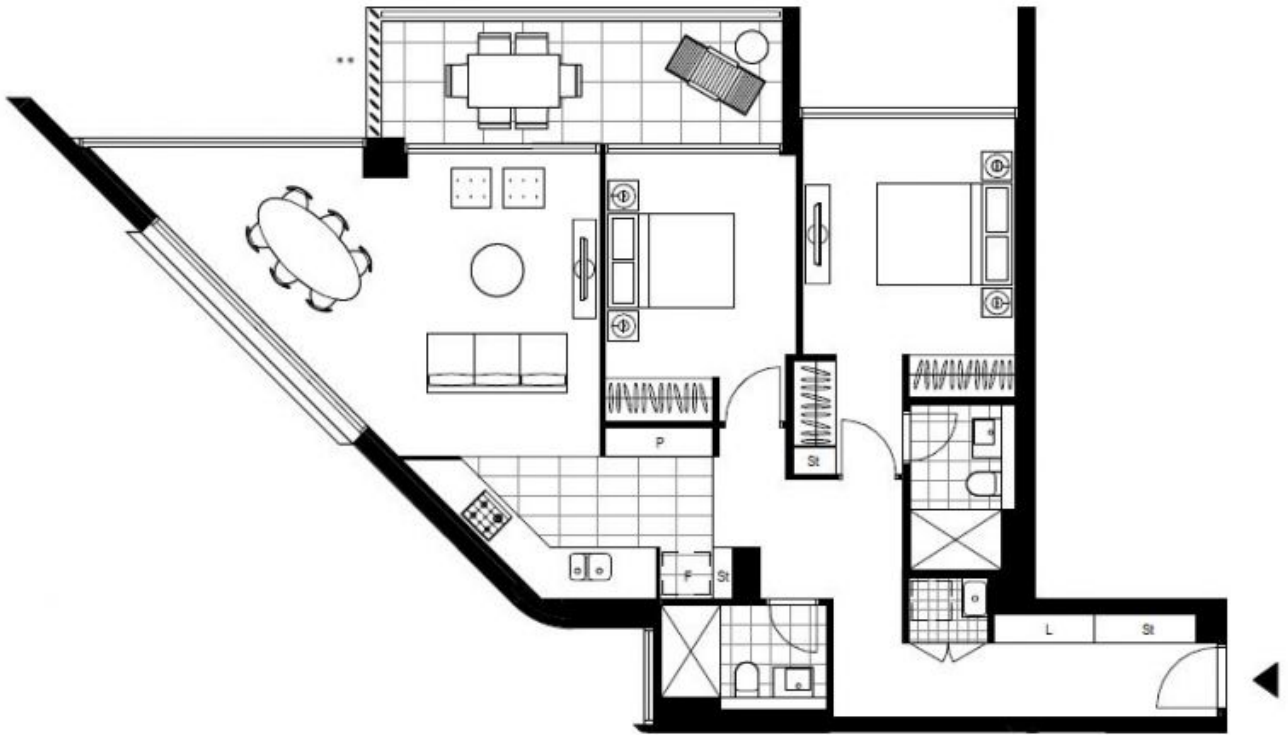
**Contact:** Christine Howison  
02 8588 8888  
0459 222 085

**Type:** Apartment

**Date Available:** 22/11/2019

**Bond:** \$3520

<https://www.resbymirvac.com>



Plans shown are only indicative of layout. Dimensions are approximate.

**ST LEONARDS, NSW**  
2609/472 Pacific Highway