



## DOCKLANDS, VIC

1605/100 Lorimer Street

2  
BED

2  
BATH

2  
CAR



### The ultimate two bedroom + study apartment - over 120m2 of luxurious internal space

Experience waterfront living at its finest with this contemporary two-bedroom, two-bathroom plus study apartment. Rising high above the world on the sixteenth floor of the prestigious Array complex, it makes for an incredible inner-city base for the highest calibre resident.

Boasting breathtaking marina, city and bay views, this clean-lined home showcases a generously sized living and dining room incorporating a sparkling contemporary kitchen with a central island bench/breakfast bar. Roam freely throughout this expansive floor plan with master quarter incorporating walk in robe and full ensuite with his/her vanities and deep relaxing bath. Second bedroom adjacent central main bathroom and a separate study room perfect for those in the market for either a two or three bedroom space.

**\$855 per week**

**Contact:** Baden Lucas  
03 9645 1199  
0418 888 751

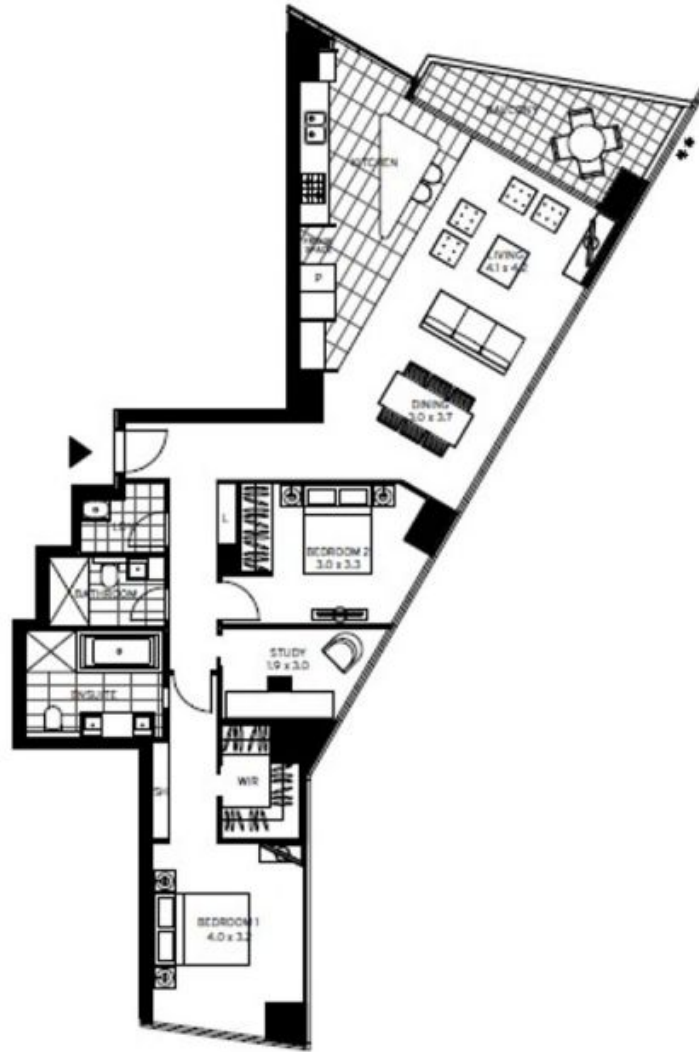
**Type:** Apartment

**Date Available:** 29/11/2019

**Leased Date:** 06/12/2019

**Bond:** \$5130

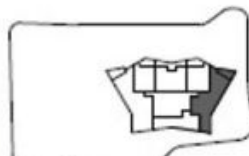
<https://www.resbymirvac.com>



LEVEL 7,8,9,10,11,12,13,14,15,16,17,18,19,20

APT 7.05  
APT 8.05  
APT 9.05  
APT 10.05  
APT 11.05  
APT 12.05  
APT 13.05  
APT 14.05  
APT 15.05  
APT 16.05  
APT 17.05  
APT 18.05  
APT 19.05  
APT 20.05

#### LOCATION PLAN



Level 7 shown



#### TOWER 2 BEDROOM + 2 BATHROOM + STUDY

Internal Area 121 m<sup>2</sup>  
Balcony Area 10 m<sup>2</sup>  
Total Area 131 m<sup>2</sup>

Does not include the first landing level, includes the first and second floors and the third floor, parking and external storage areas.



0 1 2 4m

Please note that this floor plan is a guide only and not intended to be used for construction. The information contained herein is intended to provide a general overview of the proposed development and is not intended to be used for construction. The information contained herein is intended to provide a general overview of the proposed development and is not intended to be used for construction. The information contained herein is intended to provide a general overview of the proposed development and is not intended to be used for construction.

For further enquiries call 03 9645 9400 or visit [arraybymirvac.com](http://arraybymirvac.com)



Plans shown are only indicative of layout. Dimensions are approximate.

**DOCKLANDS, VIC**  
1605/100 Lorimer Street