



DOCKLANDS, VIC

3101/50 Lorimer Street

3
BED

2
BATH

2
CAR



A golden penthouse opportunity that is once in a lifetime!

Highlighted by remarkable 270 degree views and an utterly unique floorplan that promotes expansive formal and casual living, this opulent 3 bedroom, 2.5 bathroom, 2 car space penthouse is an undisputed masterpiece. The Tower 1 complex is one of the most iconic in all of the Docklands, with this 31st floor apartment housed within the unique skewed gold glass box sitting on top of this Yarra's Edge complex. This is genuine penthouse gold!

? 230 sqm (approx.) of total living space makes this one of the largest apartments in Yarra's Edge

? Incredible 270 degree views include the full city skyline, Yarra River and marina, mountain ranges to the east and west, Port Phillip Bay, Docklands Park, and Albert Park Lake

\$2,100,000 - \$2,250,000

Contact: Baden Lucas
03 9645 1199
0418 888 751

Type: Apartment

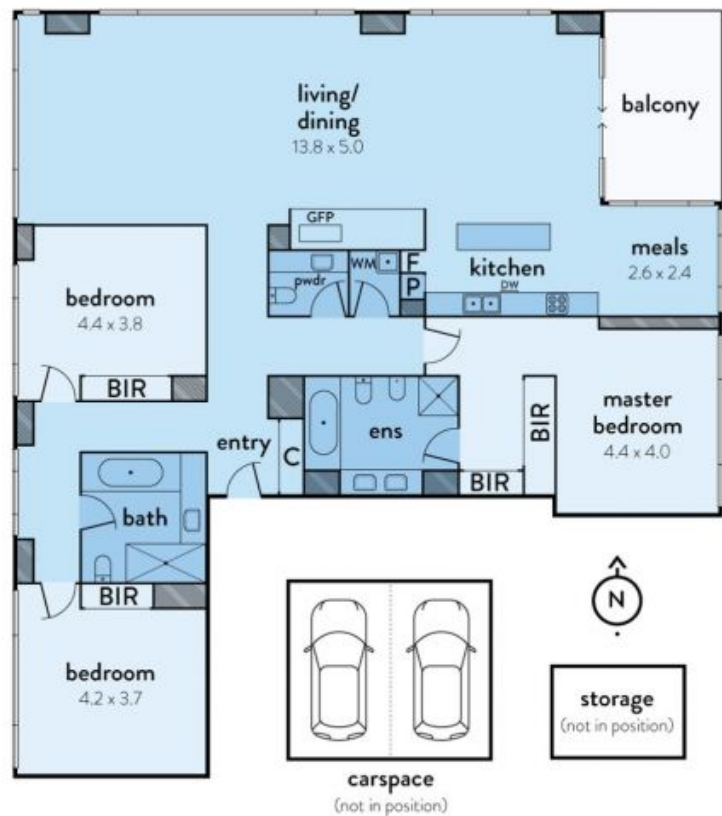
Sold Date: 10/02/2020

<https://www.resbymirvac.com>

3101/50 LORIMER STREET, DOCKLANDS



This floorplan is an artist's impression only, it contains information that we believe to be reliable however we cannot guarantee and accept no responsibility for the accuracy of information supplied. All dimensions are indicative and listed in metres. Interested parties should take their own measurements or engage the services of a licensed surveyor.



Plans shown are only indicative of layout. Dimensions are approximate.

DOCKLANDS, VIC
3101/50 Lorimer Street