



ST LEONARDS SQ

by mirvac

TOWER TWO - THE JACKSON READY TO OCCUPY

SATURDAY 14TH DECEMBER

STUDIO, 1, 2 AND 3 BEDROOM APARTMENTS

OPEN FROM 10.00AM - 2.00PM

MEET YOUR ON SITE LEASING TEAM AT THE CONCIERGE DESK

486 PACIFIC HIGHWAY, ST LEONARDS



ST LEONARDS, NSW
1302/472 Pacific Highway

1 BED	1 BATH	1 CAR	
-----------------	------------------	-----------------	--

Exclusive One Broom with Parking | Pets on Application

Real Estate Services by Mirvac is proud to present St Leonards Square, the soon-to-be completed Mirvac Development featuring 1-Bedroom Apartments available to lease from October 2019.

St Leonards Square exemplifies Mirvac's reputation for sophisticated living in Sydney with superb amenities, exceptional harbour and city views and a vibrant ground floor plaza. St Leonards Square is an iconic destination that will define the area for years to come.

This 58sqm, 1-Bedroom Apartment features:

- Oversized bedroom with built-in wardrobe

DEPOSIT TAKEN

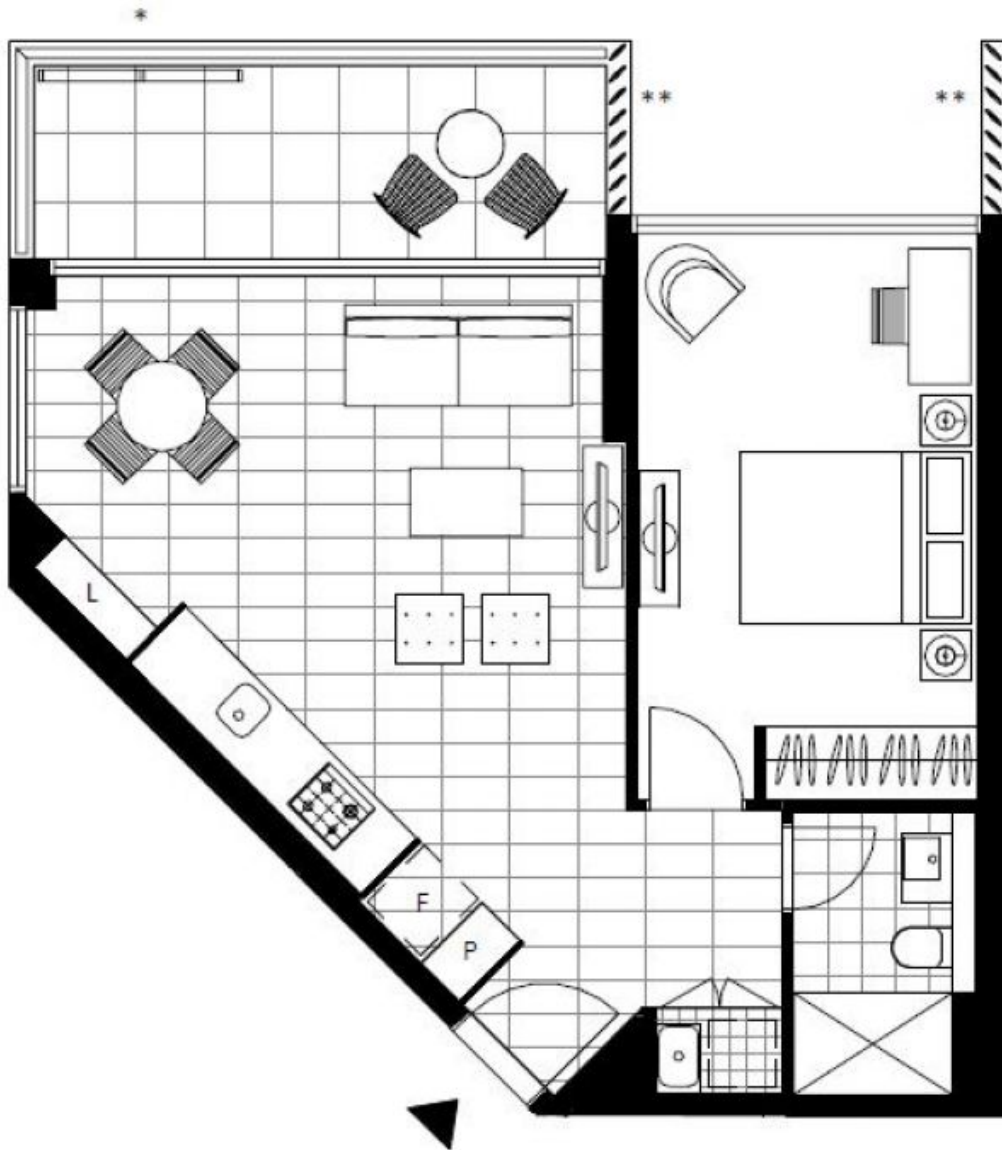
Contact: Christine Howison
02 8588 8888
0459 222 085

Type: Apartment

Date Available: 28/10/2019

Bond: \$2800

https://www.resbymirvac.com



Plans shown are only indicative of layout. Dimensions are approximate.

ST LEONARDS, NSW
1302/472 Pacific Highway