



ST LEONARDS SQ

by mirvac

TOWER TWO - THE JACKSON READY TO OCCUPY

**SATURDAY 14TH DECEMBER**

STUDIO, 1, 2 AND 3 BEDROOM APARTMENTS

OPEN FROM 10.00AM - 2.00PM

MEET YOUR ON SITE LEASING TEAM AT THE CONCIERGE DESK  
486 PACIFIC HIGHWAY, ST LEONARDS



real estate  
services  
by mirvac



**ST LEONARDS, NSW**  
1302/472 Pacific Highway

**1**

BED

**1**

BATH

**1**

CAR



**Exclusive One Broom with Parking | Pets on Application**

Real Estate Services by Mirvac is proud to present St Leonards Square, the soon-to-be completed Mirvac Development featuring 1-Bedroom Apartments available to lease from October 2019.

St Leonards Square exemplifies Mirvac's reputation for sophisticated living in Sydney with superb amenities, exceptional harbour and city views and a vibrant ground floor plaza. St Leonards Square is an iconic destination that will define the area for years to come.

This 58sqm, 1-Bedroom Apartment features:

- Oversized bedroom with built-in wardrobe

**DEPOSIT TAKEN**

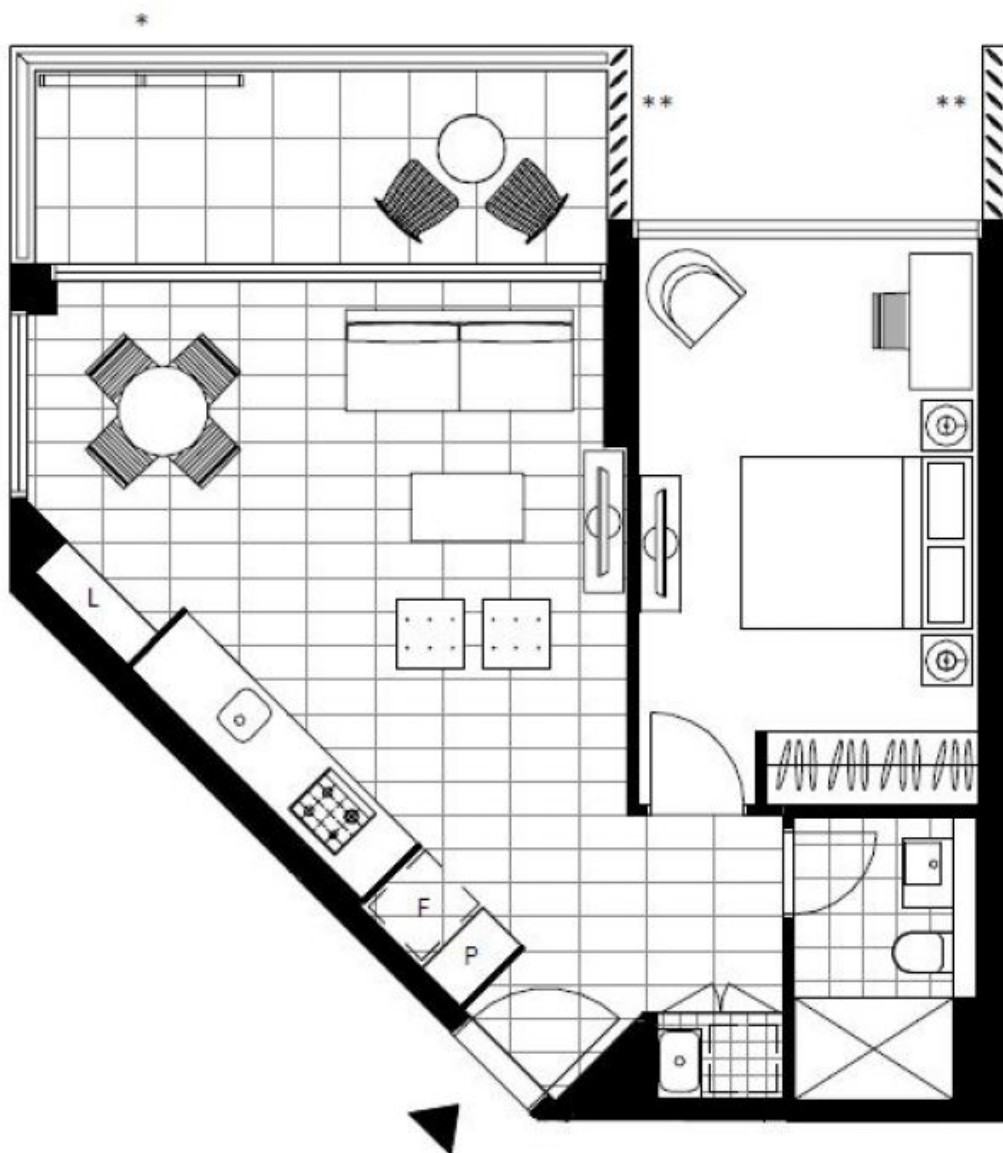
**Contact:** Christine Howison  
02 8588 8888  
0459 222 085

**Type:** Apartment

**Date Available:** 28/10/2019

**Bond:** \$2800

<https://www.resbymirvac.com>



Plans shown are only indicative of layout. Dimensions are approximate.

**ST LEONARDS, NSW**  
1302/472 Pacific Highway