



ZETLAND, NSW

2007/6 Ebsworth Street

2 BED **2** BATH **1** CAR 

2-Bedroom Apartment on Level 20 in Zetland

This 84sqm, 2-Bedroom Apartment features:

- Open-plan living and dining area
- Amazing district views from the balcony
- Oversized bedrooms with generous built-in wardrobes
- Contemporary kitchen with stone benchtops and Smeg appliances
- Sleek bathroom with plenty of vanity storage
- Internal laundry with dryer included
- Secure car space and storage cage included
- Ducted A/C, video intercom and NBN connectivity
- 300m to Woolworths, The Social Corner and Green Square Train Station (10mins to the City)

DEPOSIT TAKEN

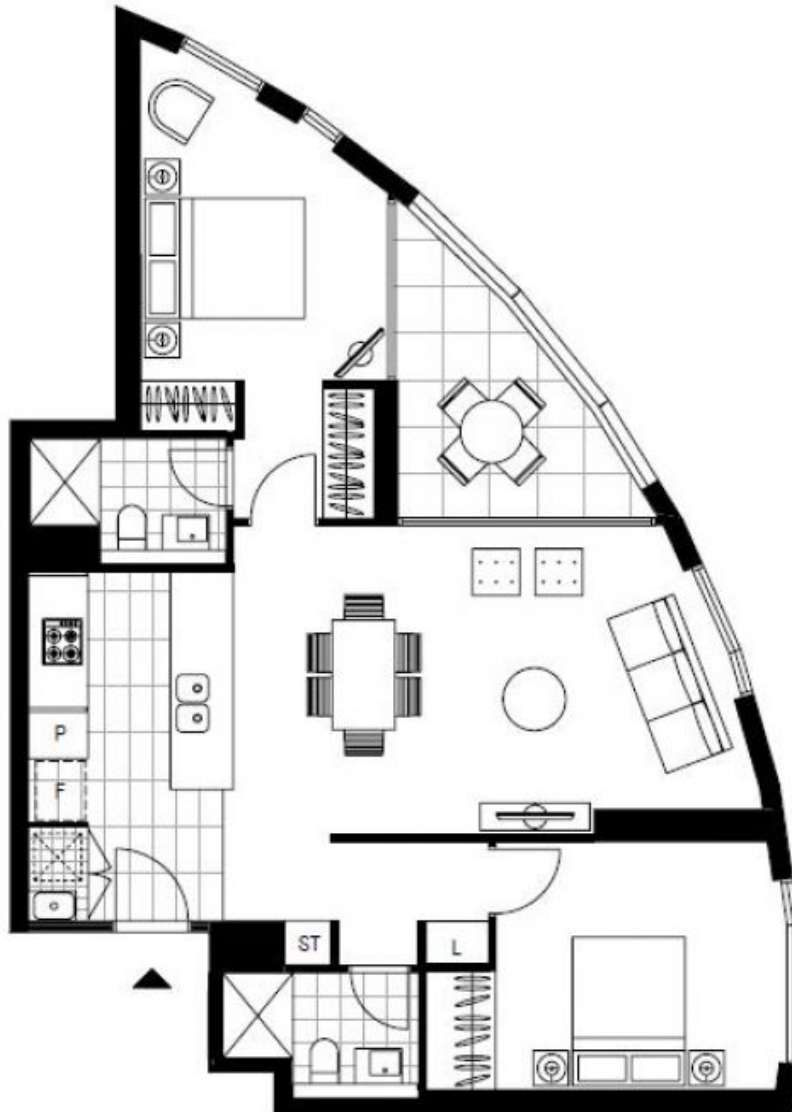
Contact: Carmen Whiteley
02 8588 8888
0497 555 519

Type: Apartment

Date Available: 09/11/2019

Bond: \$3200

<https://www.resbymirvac.com>



LEVEL 20

Plans shown are only indicative of layout. Dimensions are approximate.

ZETLAND, NSW
2007/6 Ebsworth Street