



**ST LEONARDS, NSW**  
2105/472 Pacific Highway

**2** BED **2** BATH **1** CAR 

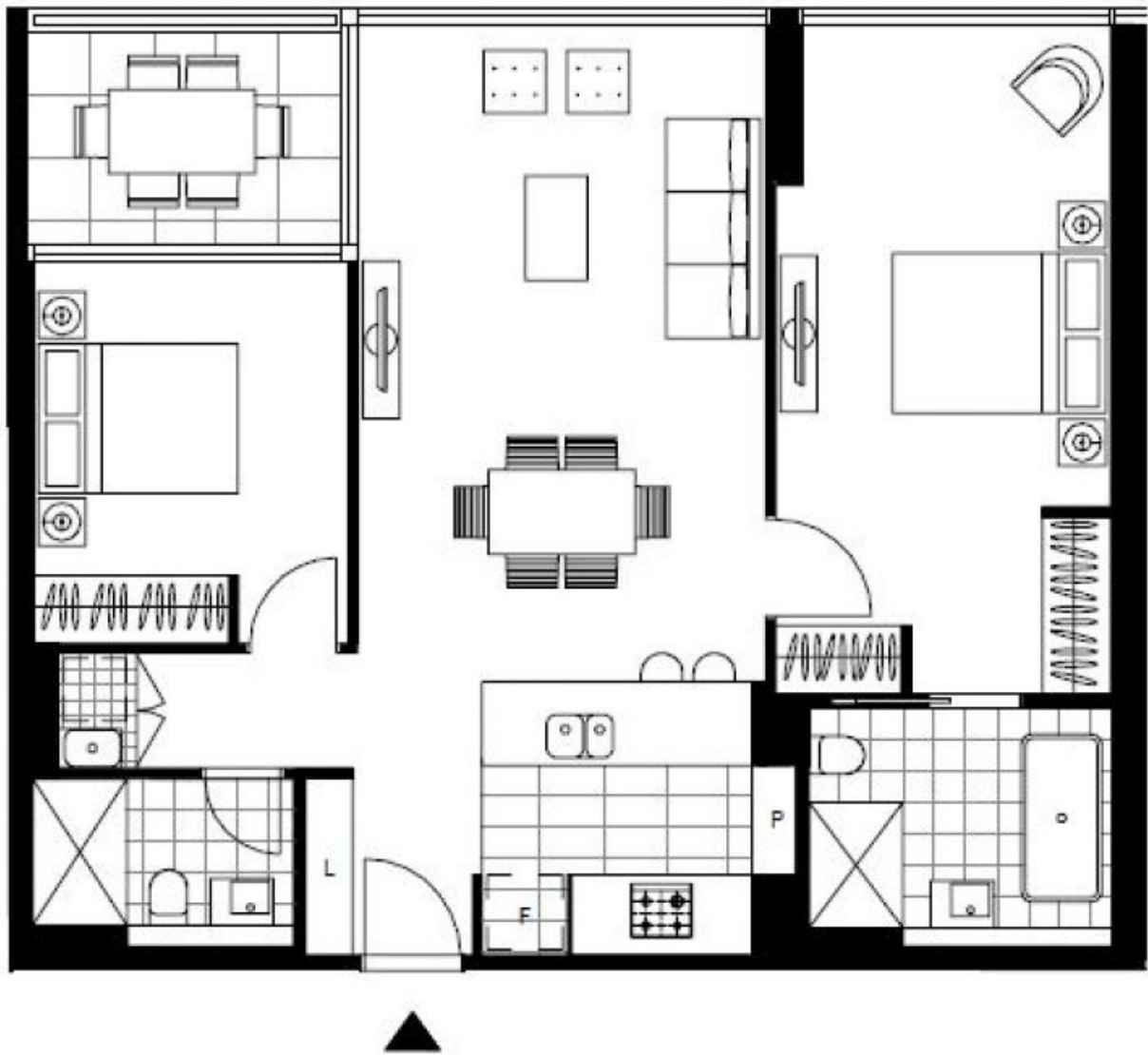
**Deposit Taken**

This 89sqm, 2-Bedroom Apartment features:

- Well-appointed bedrooms with built-in wardrobes
- Open-plan living and dining area
- Modern island kitchen with stone benchtops and Miele appliances
- Luxurious bathrooms with plenty of storage, bath in ensuite
- South east-facing balcony with phenomenal views
- Internal laundry with dryer included
- Secure car space and 2 storage cages included
- Ducted A/C, video intercom and NBN connectivity
- Resident access to the pool, spa, sauna, steam room and outdoor terrace
- St Leonards Square will house a fitness centre and concierge facility

**DEPOSIT TAKEN**

**Contact:** Christine Howison  
02 8588 8888  
0459 222 085  
**Type:** Apartment  
**Date Available:** 16/11/2019  
**Bond:** \$4400  
<https://www.resbymirvac.com>



Plans shown are only indicative of layout. Dimensions are approximate.

**ST LEONARDS, NSW**  
2105/472 Pacific Highway