

## ZETLAND, NSW

2009/6 Ebsworth Street

**2**  
BED

**1**  
BATH



### High-Rise, 2-Bedroom Apartment near Green Square Train Station

This 75sqm, 2-Bedroom Apartment features:

- Oversized bedrooms with generous built-in wardrobes
- Open-plan living and dining area
- Amazing district views from the balcony
- Contemporary kitchen with stone benchtops and Smeg appliances
- Sleek bathroom with plenty of vanity storage
- Internal laundry with dryer included
- Secure storage cage included
- Ducted A/C, video intercom and NBN connectivity
- 300m to Woolworths, The Social Corner and Green Square Train Station (10mins to the City)

### DEPOSIT TAKEN

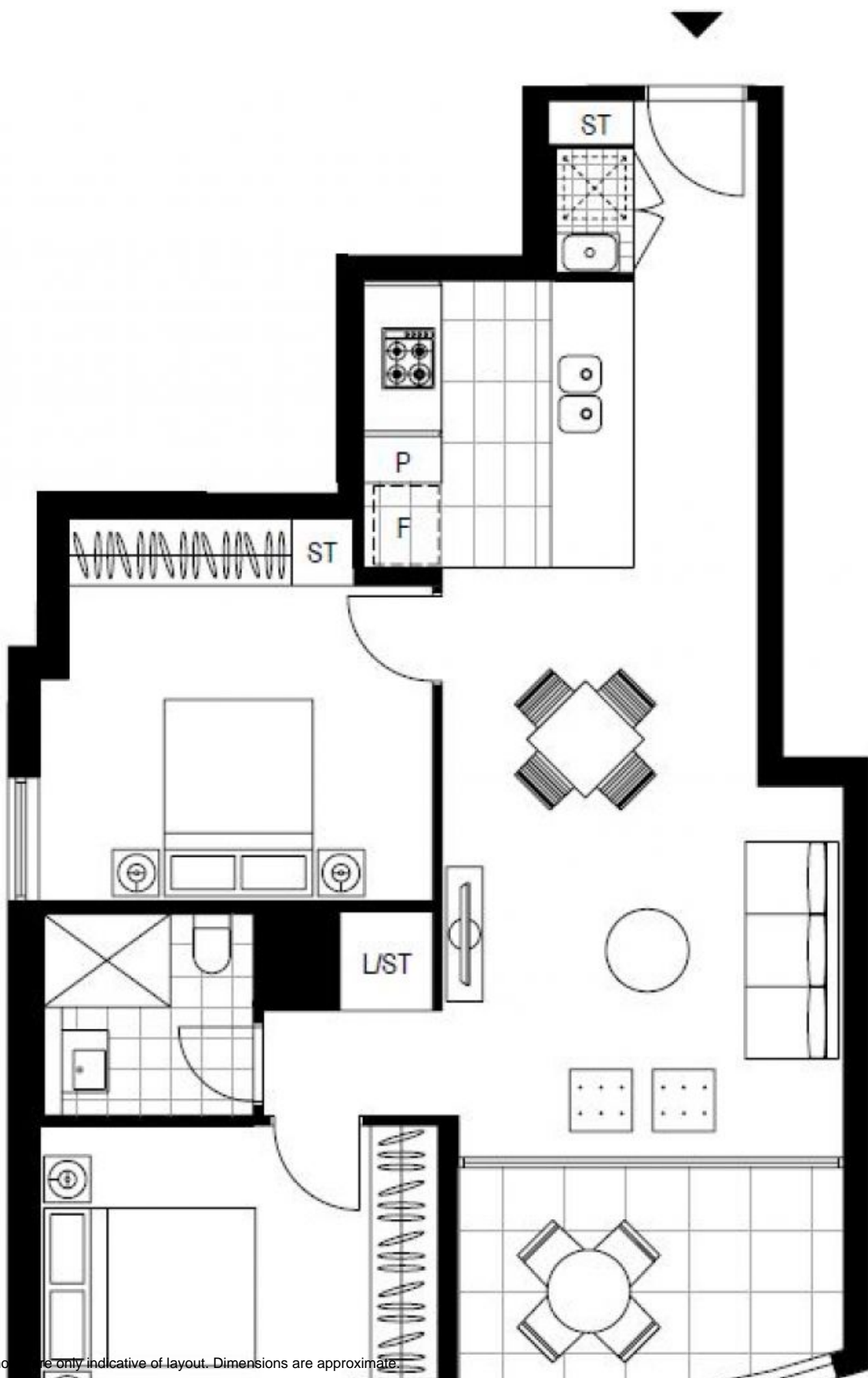
**Contact:** Carmen Whiteley  
02 8588 8888  
0497 555 519

**Type:** Apartment

**Date Available:** 25/03/2021

**Bond:** \$2720

<https://www.resbymirvac.com>



Plans shown are only indicative of layout. Dimensions are approximate.

**ZETLAND, NSW**  
2009/6 Ebsworth Street