

DOCKLANDS, VIC

2901/81 South Wharf Drive

3
BED

2
BATH

2
CAR



Stunning sub-penthouse living with breathtaking bay vistas

With awe-inspiring uninterrupted views including Port Phillip Bay, Docklands Marina and Melbourne CBD, this astonishing 3 bedroom + study, 2 bathroom, 2 car space apartment offers generous and luxurious sub-penthouse living in the exceptional Forge residential complex.

- ? Incredible floor-to-ceiling windows lets in brilliant natural light and allows for magnificent views to the south, west, and north
- ? Winter garden has northern vistas and louvre shutters
- ? Generous and separate lounge and dining zones
- ? Elegant and sophisticated stone kitchen with beautiful island bench, premium Miele s/steel appliances, and integrated fridge/freezer
- ? Enjoy the interacting view and natural sunlight while you are cooking through natural glass splash back in the kitchen

\$1,150,000 - \$1,250,000

Contact: Baden Lucas
03 9645 1199
0418 888 751

Type: Apartment

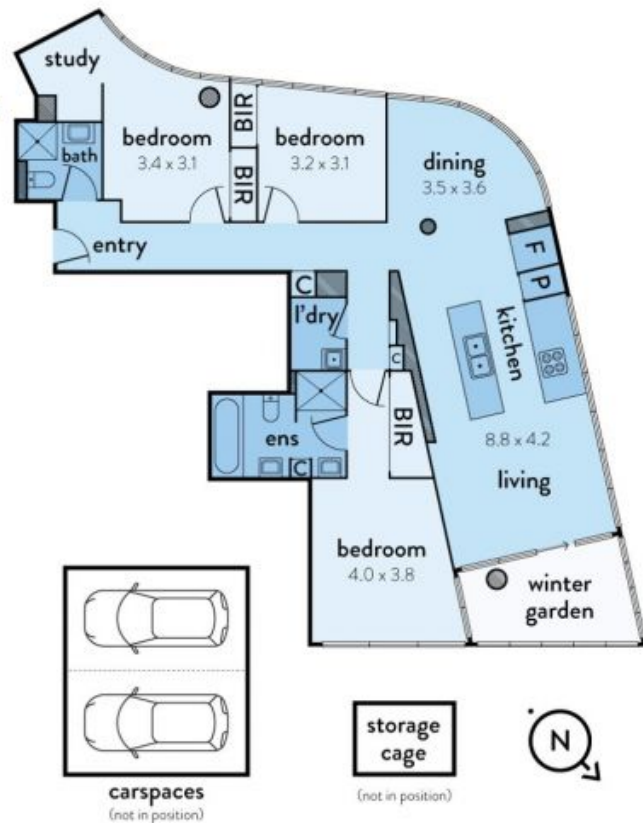
Sold Date: 11/12/2019

<https://www.resbymirvac.com>

2901/81 SOUTH WHARF DRIVE, DOCKLANDS



This floorplan is an artist's impression only, it contains information that we believe to be reliable however we cannot guarantee and accept no responsibility for the accuracy of information supplied. All dimensions are indicative and listed in metres. Interested parties should take their own measurements or engage the services of a licensed surveyor.



Plans shown are only indicative of layout. Dimensions are approximate.

DOCKLANDS, VIC
2901/81 South Wharf Drive