



## ST LEONARDS, NSW

1905/472 Pacific Highway

**2** **2** **1** 

BED BATH CAR

### 2-Bedroom Apartment with Amazing Views!

This 89sqm 2-Bedroom Apartment features:

- Well-appointed bedrooms with built-in wardrobes
- Open-plan living and dining area
- Modern island kitchen with stone benchtops and Miele appliances
- Luxurious bathrooms with plenty of storage, bath in ensuite
- South east-facing balcony with spectacular views
- Internal laundry with dryer included
- Secure car space and 2 storage cages included
- Ducted A/C, video intercom and NBN connectivity
- Resident access to the pool, spa, sauna, steam room and outdoor terrace
- St Leonards Square houses a fitness centre and concierge facility

### \$920pw | Your Exclusive Onsite Experts

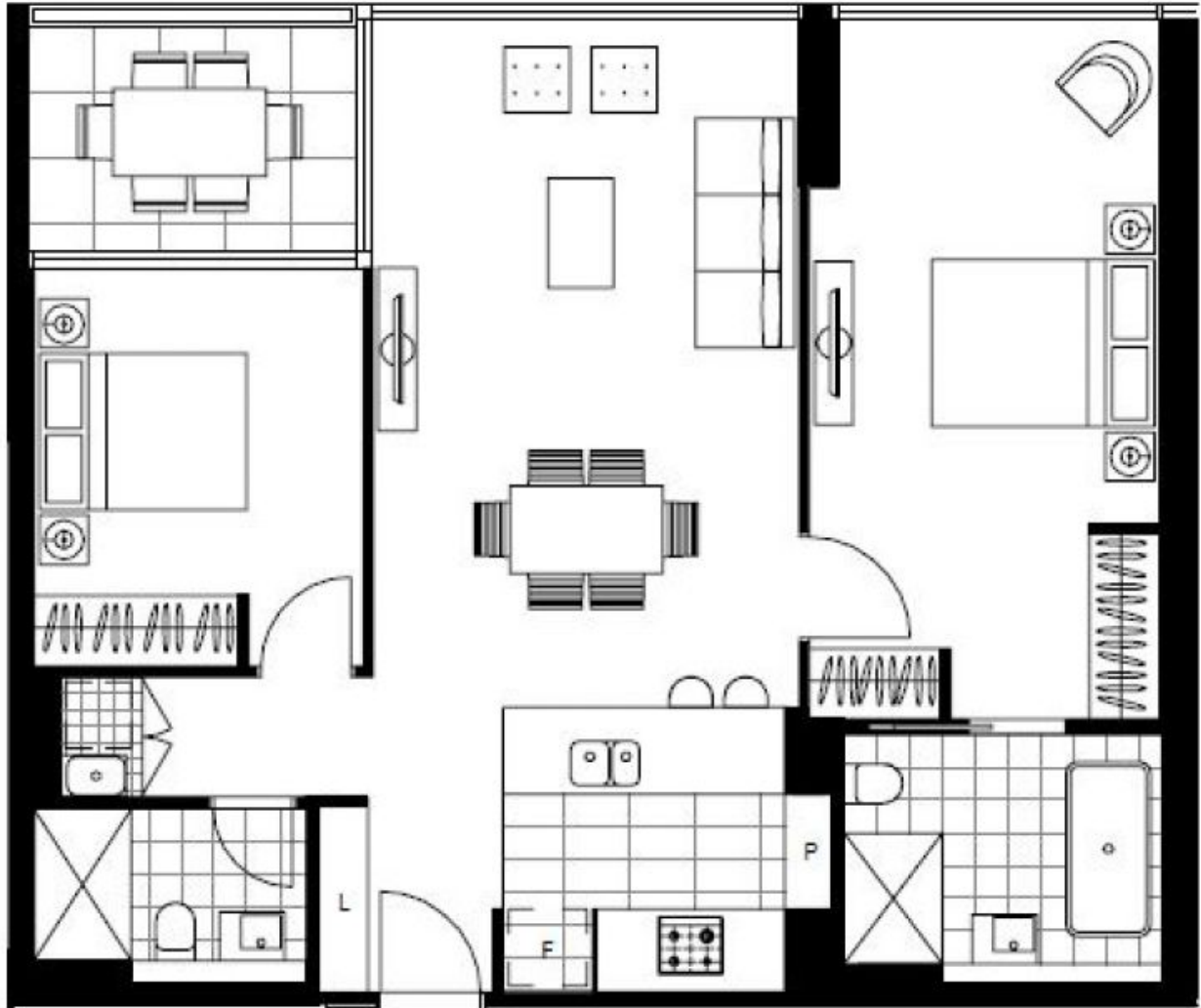
**Contact:** Christine Howison  
02 8588 8888  
0459 222 085

**Type:** Apartment

**Date Available:** 24/11/2020

**Bond:** \$36800

<https://www.resbymirvac.com>



Plans shown are only indicative of layout. Dimensions are approximate.

**ST LEONARDS, NSW**  
1905/472 Pacific Highway