



EAST MELBOURNE, VIC

620/280 Albert Street

2
BED

2
BATH

1
CAR



Brand new 2-bedroom Eastbourne apartment - \$925 per week Bespoke Luxury & Style

Quality is paramount in this superb two bedroom apartment boasting a prestigious location in The Eastbourne - East Melbourne's finest apartment complex positioned opposite Fitzroy Gardens just a heartbeat from the City.

The stylish interior includes a generous living area with prestige Miele appliances and integrated fridge/freezer opening to a balcony with garden and city views, two sparkling bathrooms and concealed laundry; plus one basement car space & storage locker.

A dazzling array of resort-style amenities are available to the fortunate residents ? see offerings below.

Contact: Baden Lucas
03 9645 1199
0418 888 751

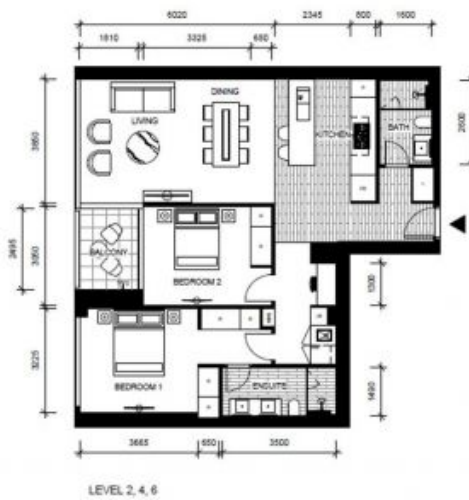
Type: Apartment

Date Available: 19/09/2019

Leased Date: 01/11/2019

Bond: \$4019

<https://www.resbymirvac.com>



THE
EASTBOURNE
MIRVAC

SCALE 1:100 @ A3

Please note that all the dimensions on plan are indicative only and provided for information only.

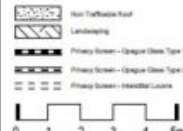
APT 2-20
APT 4-20
APT 6-20

LOCATION PLAN



CITY

FOR CONSTRUCTION DIMENSIONED PLAN
APARTMENT
2 BED 2 BATH



IMPORTANT NOTES

While East Melbourne Pty has been taken in preparing this interim dimensioned floorplan, the client East Melbourne Pty is not responsible for any errors or omissions and is not responsible for any changes or variations during construction completion. Please note any changes or variations during construction completion must be made in accordance with the relevant building codes and standards. The floorplan and construction documents are not intended to be used as a guide only. The plan does not show structural details other than the walls to indicate the floor position of power points, TV connection points and the like. Prospective purchasers must refer to the contract for sale for the full of conditions, all practices, including the laws, regulations, planning and zoning are intended as a guide only and are not to be relied on as a representation of the final product. This interim floorplan has been provided for the specific purpose of enabling the purchaser to commence consideration of their interior design process and for no other reason. In considering their interior design process purchasers must take into account the interim nature of the floor plan and the fact that changes may be made to the dimensions and measurements prior to settlement. Mirvac and its related body corporate and their associates and agents are not responsible for the accuracy of the interim dimensioned floorplan as against the final floorplan or for any other basis in reliance on the interim floorplan by the purchaser.

1907119 (1)

For Further enquiries
call 03 9645 9400 or visit
theeastbourne.mirvac.com



Plans shown are only indicative of layout. Dimensions are approximate.

EAST MELBOURNE, VIC
620/280 Albert Street