



## EAST MELBOURNE, VIC

817/280 Albert Street

**2** **2** **1**  
 BED BATH CAR



### The Eastbourne's largest 2-bedroom apartment with all the extras ? Call Jenna 0488 488 379

This unique two bedroom apartment delivers the very best in luxurious living. A sleek interior features a 2 generous living areas, beautiful kitchen with adjoining scullery, 2 balconies with garden, CBD and Eastern Melbourne views, two sparkling bathrooms and concealed laundry; plus two basement car spaces & 2 storage lockers.

Apartment features:

- ? Largest 2 bedroom apartment at The Eastbourne
- ? Spectacular views of Fitzroy Gardens, Melbourne City, Eastern Melbourne and mountain ranges
- ? X2 Balconies
- ? Spacious kitchen with adjoining scullery

### \$2050 per week

**Contact:** Baden Lucas  
 03 9645 1199  
 0418 888 751

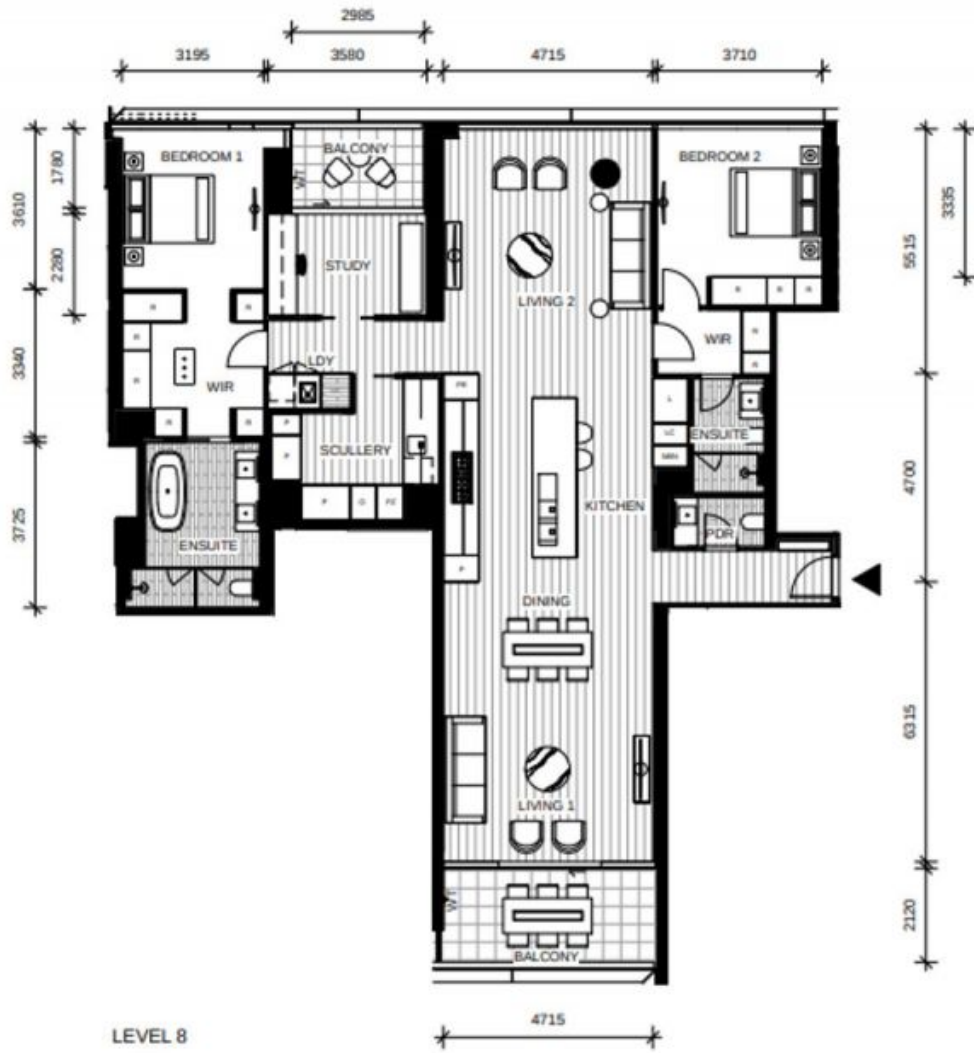
**Type:** Apartment

**Date Available:** 12/09/2019

**Leased Date:** 22/10/2019

**Bond:** \$12300

<https://www.resbymirvac.com>



**AMALGAMATION**  
APT 8.07 & 8.17

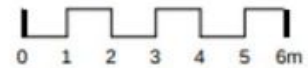
**LOCATION PLAN**



**FOR CONSTRUCTION DIMENSIONED PLAN**  
**APARTMENT**  
**2 BED 2 BATH + STUDY**



- Non Trafficable Roof
- Landscaping
- Privacy Screen - Opaque Glass Type 1
- Privacy Screen - Opaque Glass Type 2
- Privacy Screen - Interstitial Louvre



SCALE 1:125 @ A3

Please note that all the dimensions on plan are indicative only and provided for information only.

Plans shown are only indicative of layout. Dimensions are approximate.

**EAST MELBOURNE, VIC**  
817/280 Albert Street