



EAST MELBOURNE, VIC
617/280 Albert Street

2 BED **2** BATH **2** CAR



Effortless Elegance ? brand new 2-bedroom apartment with park views

Imagine living opposite Fitzroy Gardens in 'The Eastbourne' apartment complex. Where elegance is timeless in this stunning two bedroom apartment, defined by bespoke luxury and style plus an amazing array of communal amenities. Highlighted by a sophisticated and spacious interior featuring a generous living area with prestige Miele appliances and integrated fridge/freezer opening to a balcony with park and city views, two sparkling bathrooms and concealed laundry; plus two basement car spaces & storage cage.

\$1150 per week

Contact: Baden Lucas
03 9645 1199
0418 888 751

Type: Apartment

Date Available: 06/09/2019

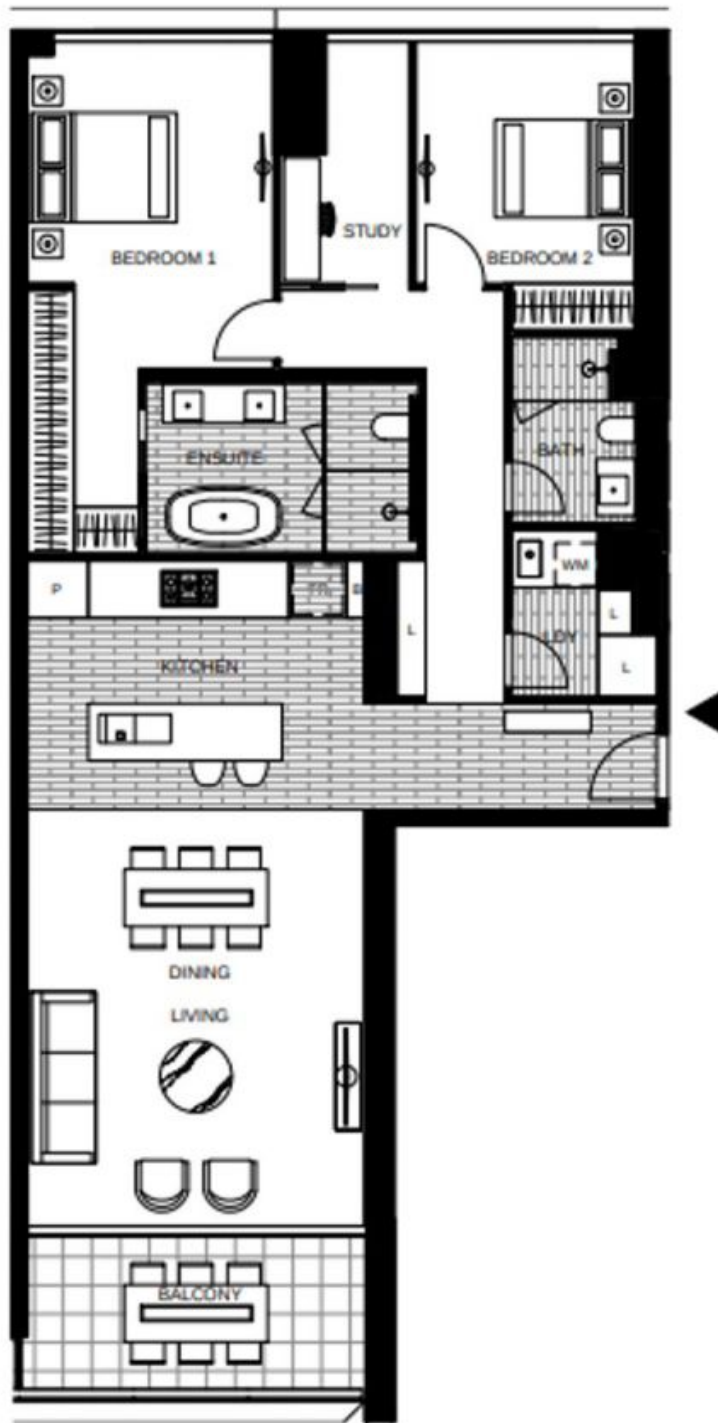
Leased Date: 04/10/2019

Bond: \$4997

<https://www.resbymirvac.com>

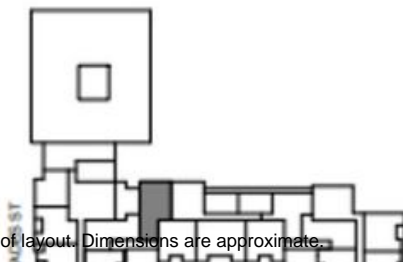
Resident facilities are second-to-none ? see offerings below.

Apartment features:



- APT 3-17
- APT 4-17
- APT 5-17
- APT 6-17
- APT 7-17

LOCATION PLAN



**APARTMENT
2 BED 2 BATH + STUDY**



Internal Area 126m²
Balcony Area 11m²

Total Area 137m²

Plans shown are only indicative of layout. Dimensions are approximate.

Areas subject to final survey, area includes balcony and/or terrace where applicable. E

EAST MELBOURNE, VIC
617/280 Albert Street

0 1 2 3 4 5m