



**ZETLAND, NSW**  
407/6 Ebsworth Street

**2** BED **2** BATH **1** CAR 

**Oversized 2-Bedroom Apartment with Parking in Ovo Tower!**

This 107sqm, 2-Bedroom Apartment features:

- Spacious bedrooms with built-in wardrobes
- Open-plan living and dining area, perfect for entertaining
- Modern kitchen with stone benchtops and Smeg appliances
- Ultramodern bathrooms with vanity storage, bath in ensuite
- Generous North-facing balcony with partial city views
- Internal laundry with dryer included
- Secure car space and storage cage included
- Ducted A/C, video intercom and NBN connectivity
- 300m to Woolworths, The Social Corner and Green Square Train Station (10mins to the City)

**\$700 per week**

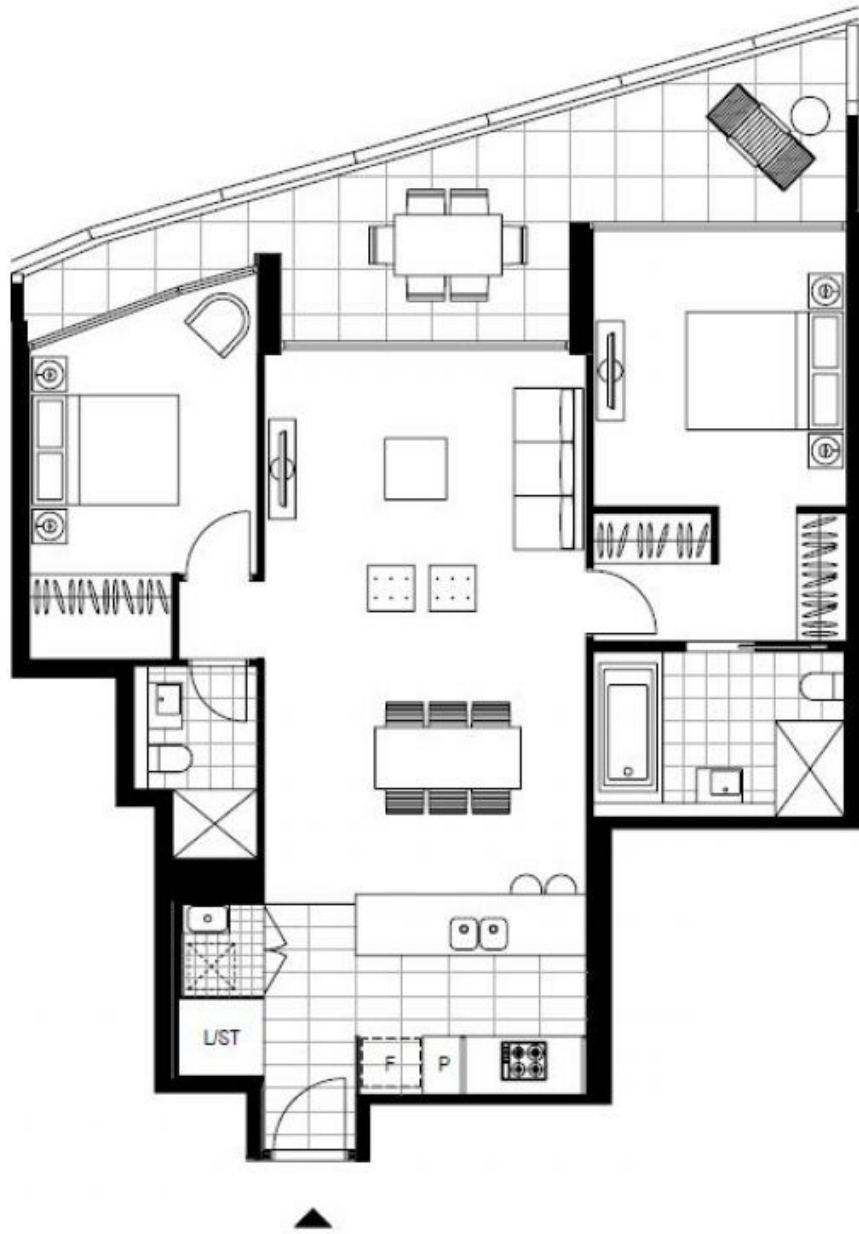
**Contact:** Carmen Whiteley  
02 8588 8888  
0497 555 519

**Type:** Apartment

**Date Available:** 30/09/2020

**Bond:** \$2800

<https://www.resbymirvac.com>



Plans shown are only indicative of layout. Dimensions are approximate.

**ZETLAND, NSW**  
407/6 Ebsworth Street